

Ross-Tech



VAG-COM

Pro-Kit Manual

**Diagnostic Software for
VW/Audi/SEAT/Skoda**

User's Manual Release 607

**Copyright (c) 2000-2006
by Ross-Tech, LLC.
920 South Broad Street
Lansdale, PA 19446
+1-215-361-8942
www.Ross-Tech.com**

Disclaimer:

All rights reserved, No part of this publication may be reproduced, stored in a retrieval system, or transmitted in any form or by any means, electronic, mechanical, photocopying, recording, or otherwise, without the prior written permission of Ross-Tech, LLC. The information contained herein is designed only for use with this VAG-COM Professional Kit. Ross-Tech, LLC. is not responsible for any use of this information as applied to this or other diagnostic equipment.

Neither Ross-Tech, LLC. nor its affiliates shall be liable to the purchaser of this product or third parties for damages, losses, costs, or expenses incurred by purchaser or third parties as a result of: accident, misuse, or abuse of this product or unauthorized modifications, repairs, or alterations to this product, or failure to comply with Ross-Tech, LLC's written instructions.

By using VAG-COM, you acknowledge that this Program is provided "as is" and "with all faults, defects and errors" and that all use of the Program is at your own full risk. It has been extensively tested, but we cannot guarantee it will work correctly with every system in every car. We will make our best effort to fix any bugs and to enhance the program, but we specifically disclaim any liability for damage to your computer or your car, and we do not promise to have any particular enhancements available on any specific date.

Copyright © 2006 by Ross-Tech, LLC


VAG-COM

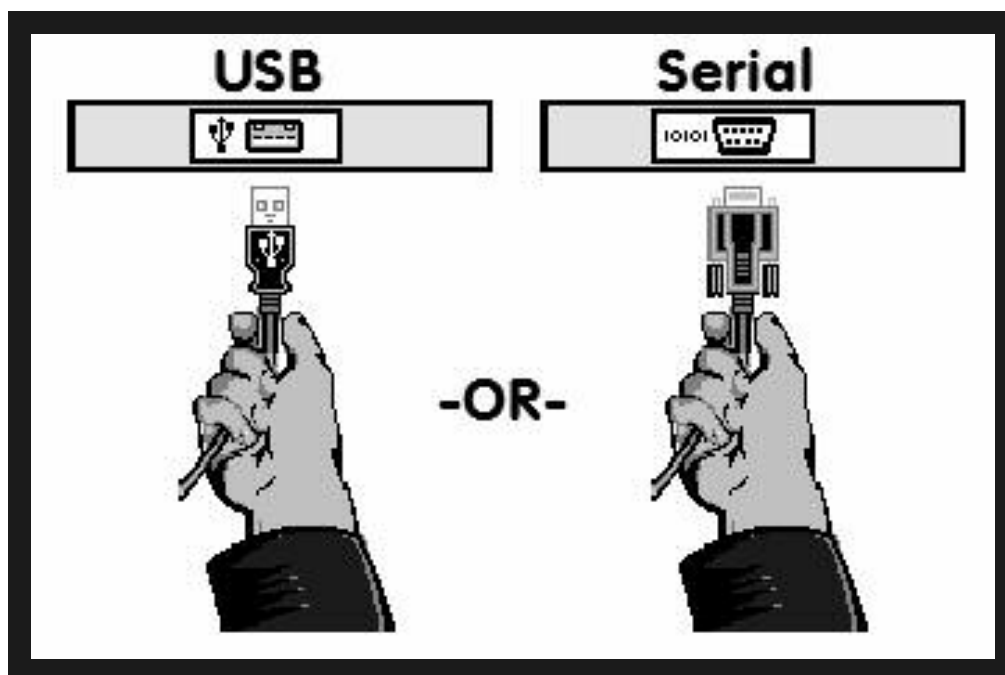
Table of Contents

Getting Started	3-7
Main Screen	8
Select Control Module	9
Open Controller	10-11
Fault Codes	12-13
Measuring Blocks	14-16
Data Logging	17-18
Single Reading	19
Supported Codes	20
Readiness	21-22
Advanced Identification	23
Advanced Measuring Blocks	24-26
Login	27-28
7-digit PIN/SKC Dialog	29-30
Basic Settings	31-32
Output Tests	23-35
Recode	36-40
Adaptation	41-42
Security Access	43-44
Auto-Scan	45-48
Control Module Finder	49
Generic OBD2	50-51
Applications	52-54
Options	55-58
About	59
Appendix A: Problems & Issues	60-61
Appendix B: FAQ (Frequently Asked Questions)	62-71
Appendix C: VAG-Scope	72-75
Appendix D: TDI Timing Checker	76-77
Appendix E: VAG Functions	78

VAG-COM - Getting Started

Thank you for purchasing VAG-COM, which allows you to turn a Windows-based PC into a sophisticated diagnostic tool for VW/Audi/SEAT/Skoda models from 1990-2007.

 (Go to our website www.ross-tech.com to download and install the latest version of VAG-COM. Click on: "Download VAG-COM Software".) The VAG-COM Pro-Kit comes with a CD containing our software as well.



▲ Connect the Serial end of your Serial Interface or the USB end of your USB Interface to the correct port on your PC. If your PC is further from the vehicle than 6 feet, connect an approved Extension Cable between the PC and the Interface. This is included in the Pro-Kit.

If you are using a 9-male pin Serial Interface, you can skip to page 6 of this manual. If you are using a USB Interface, a message like this should pop up: ►



Getting Started cont.



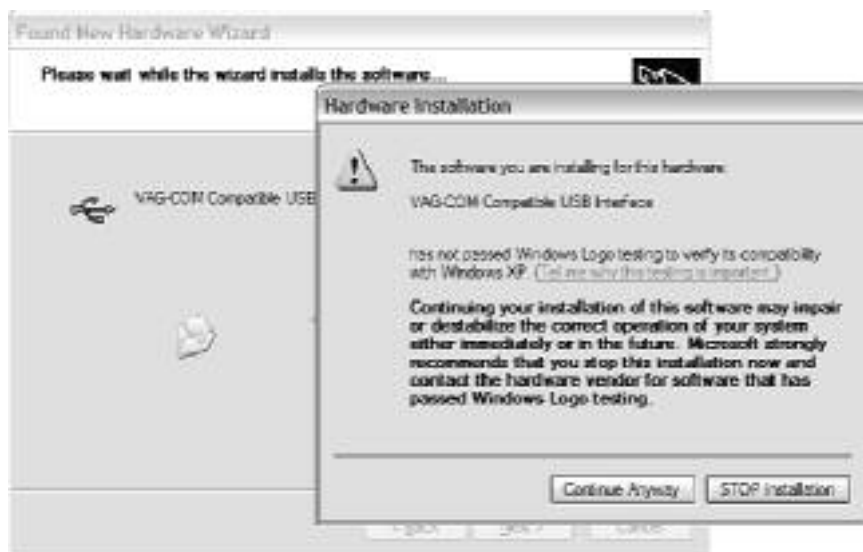
◀ Click on the Found New Hardware message and the Found New Hardware Wizard should start up. If you are prompted with the choice, pick "Not This Time" when asked if you want to connect to the Internet to search for drivers. Select "Install from a list or specific location (Advanced)" then click **[Next >]**

This dialog should appear. ▶ Select "Search for the best driver in these locations" Check "Include this location in the search:" Use the **[Browse]** button to find the VAG-COM folder (Usually C:\Program Files\VAG-COM, unless you chose a different folder when you installed the software) Click **[OK]**



◀ Make sure that you have checked "Include this location in the search:" and that it points to C:\Program Files\VAG-COM.

Getting Started cont.



◀ Click **[Next >]** and this dialog should appear:

This dialog warns you that we haven't paid Microsoft a pound of flesh to certify the driver. You're going to have to click the **[Continue Anyway]** button...:-)
The following dialog should appear:



Click **[Finish]** ▶

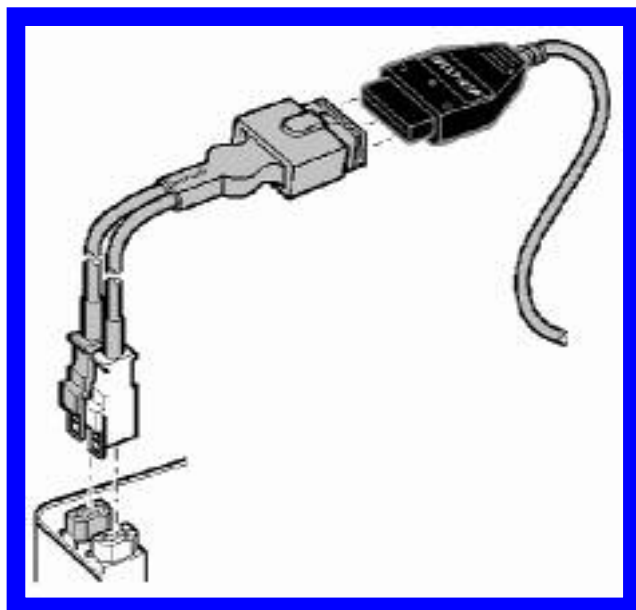
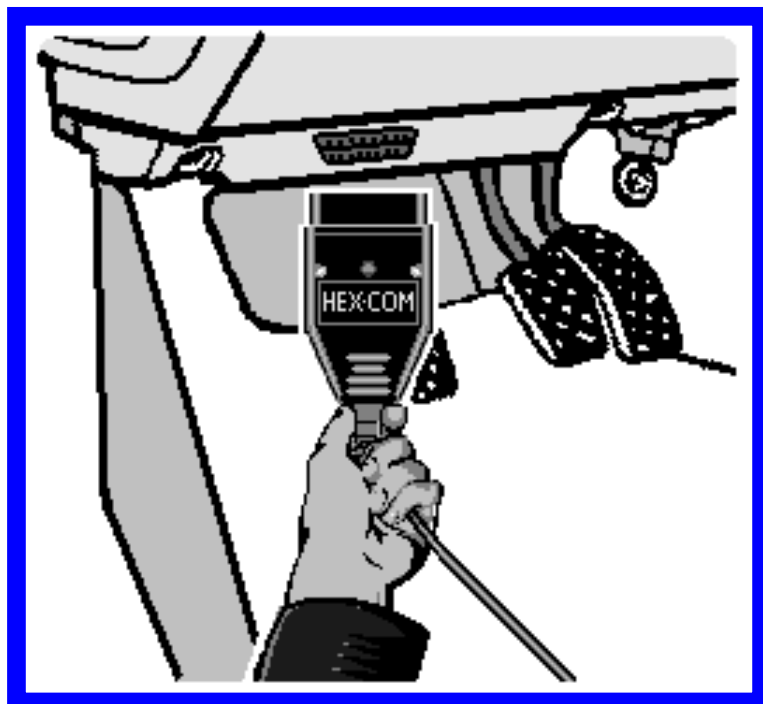
Note: If, for some reason, you installed the USB Interface without following the above instructions, and VAG-COM does not work correctly, go into your PC's Device Manager while the USB Interface is connected.

In Windows XP, you can find the Device Manager by right-clicking on My Computer. Select Manage to bring up Computer Management. On the left side of the screen under System Tools, select Device Manager.

Find the "VAG-COM Compatible USB Interface" and delete it. Check under "Other Devices". Then, unplug the USB Interface from your PC, wait 5 seconds and plug it back in. Proceed with the installation starting on Page 4.

Getting Started cont.

Connect the car end of your Interface to your vehicle's Diagnostic Port. ►



◀ If your vehicle has a 2x2 port (some pre-1996 vehicles), then use the optional 2x2 Adapter between the Interface and the ports in the car. This is included in the Pro-Kit.

Turn the vehicle's ignition switch to the ON position. Make sure the key is turned far enough that the dash lights are fully illuminated. The engine may either be running or stopped.

Start the VAG-COM program on your PC through either the Start Menu or the icon on your Desktop. ►



Getting Started cont.

From the Main Screen in VAG-COM click the **[Options]** button to go into the Options screen.



◀ Select the correct port for your PC's Serial Port (typically COM1 or COM2) or USB Port (USB) and click the **[Test]** button. Ensure that VAG-COM finds your interface. You should see a message like this.

- If the Interface Status is "Not Found!" check the connections at the car and PC. Make sure both are plugged in securely. Serial Interfaces get their power from the vehicle so they will not be recognized at all if not plugged into the car.
- Adapter Type should always be "Ross-Tech" followed by the name of the Interface.
- Version indicates the firmware version of your Interface. It may be updated by new versions of VAG-COM, if so follow the prompts on the screen.
- If K1 or K2 status are not "OK", you may have a short or an open circuit in the car's diagnostic port (most likely caused by the Aftermarket Radio Problem, as shown in the FAQ in Appendix B of this manual). CAN status indicates whether or not the vehicle uses CAN-Bus for diagnostics.

Once you have tested successfully, click **[OK]** then click **[Save]** to apply this configuration, you will be returned to the Main Screen.

Click on **[Select]** to view the Select Control Module Screen. Select one of your car's Control Modules such as Engine.

After VAG-COM has connected, click on **[Fault Codes]** to check for Fault Codes (DTC's). Repeat the process for each of your car's Control Modules. If you encounter problems, see the FAQ in Appendix B of this Manual first. If you still have problems, feel free to contact us with full details about your PC and vehicle, preferably while you are in front of both.

Note: Your car will not have all the Control Modules listed in VAG-COM, only the ones that were installed in your vehicle. See the Applications Page for your car on our Website for more info:



www.Ross-Tech.com/vag-com/cars/applications/

VAG-COM - Main Screen



This screen appears when you start VAG-COM by clicking the shortcut on your Desktop or by selecting VAG-COM from the Start Menu.

On this screen, you have 8 buttons that you can click:

[Select]

[Auto-Scan]

[Control Module Finder]

[OBD-II]

[Applications]

[Options]

[About]

Each of the above buttons is described in its own section in this manual.

[Exit] (This closes the VAG-COM program)

VAG-COM- Select Control Module



The various computers in the car are called "Control Modules" or "Controllers". On this screen, you select which Control Module you want to "talk" to. To establish communications with a particular Control Module, simply click on the appropriate button. For example, click on the button for **[01 – Engine]** to connect to the engine controller. VAG-COM has buttons for all control module addresses currently supported by the VAS-5051 and VAS-5052 factory diagnostic tools.

Module Tabs

Each tab on the top of this screen contains a number of different controllers grouped by category: **Common**, **Drivetrain**, **Chassis**, **Comfort/Conv.**, **Electronics 1**, and **Electronics 2**. Each possible controller is listed as a number and a description, i.e., **[01-Engine]**. The number corresponds to the controller number that you'd find in your Factory Repair Manual in the instructions for using a VAG-1551 or other factory diagnostic tool.

Direct Entry

You can also enter any address manually. Simply put in the address and click **[Go!]**

To return to the Main Screen, click **[Go Back]**

Note: Your car will not have all the Control Modules listed in VAG-COM, only the ones that were installed in your vehicle. See the Applications Page for your car on our Website for more info:



www.Ross-Tech.com/vag-com/cars/applications/

VAG-COM - Open Controller

VAG-COM : 01-Engine, Open Controller

Comm Status
IC=1 TE=0 RE=0
Protocol: KW1281

VAG-COM
Open Controller

Controller Info
VAG Number: 06A 906 032 CL Component: 1.8l 5V 110kW TLG V004
Soft. Coding: 06500 Shop #: WSC 86888
Extra:
Extra:

Basic Functions
These are "Safe"

Advanced Functions
Refer to Service Manual!

Close Controller, Go Back - 06

This screen will appear when VAG-COM is establishing communications with any of the Control Modules shown on the Select Control Module screen.

Comm Status Shows the status of the current communications session. Once communications have been established:

- **IC=** Shows the number of times the session has been initialized. If IC increases beyond 1, communications are less than 100% reliable.
- **TE=** is a counter of transmitter errors within individual packets. TE greater than 0 can indicate unreliable communication.
- **RE=** is a counter of receive errors within individual packets. RE greater than 0 can indicate unreliable communication.
- **Protocol** indicates whether the controller speaks **KWP-1281** , **KWP-2000** , or **CAN-Bus**. (See the Function Chart in Appendix E in this manual for more information).
- A rotating cursor shows that communication is active.

Open Controller cont.

Controller Info

Once the communications session has been established, all of the Control Module's "Identification" data is presented here.

- **VAG Number** is the VW/Audi part number for this controller.
- **Component** contains more identification information about the controller and may contain a version number for the controller's internal firmware.
- **Soft. Coding** is the Software Coding that determines various options for the controller. Note: Some older Control Modules are not "codeable" and you may see a Bosch part number or other information in this field.
- **Shop #** identifies the WorkShopCode stored in the scan-tool that performed the last Recode or Adaptation procedure in this Control Module.
- The **Extra** fields can show VIN and Immobilizer information or slave controller part numbers in some vehicles.

Basic Functions

This grouping of "Safe" functions are used to read various data from the Control Module. VAG-COM checks which functions are supported by each control module and enables the buttons for supported functions only.

Advanced Functions

These functions are capable of making various "programming" changes to the Control Module. You should refer to the Factory Repair Manual for your particular car (or to other documented procedures) before "playing" with these functions. It is completely possible to render your vehicle inoperable or damage components if you make changes in this section without the correct information and training.

It is normal for some buttons to be grayed out on some control modules. This is an indication that the control module in question doesn't support those functions. Each of the function buttons is detailed on the following pages.

Use **[Close Controller, Go Back - 06]** to properly close the communications session and return to the Select Control Module screen.

VAG-COM - Fault Codes

(VAG 1551/1552 functions 02 and 05)



On this screen, VAG-COM shows you any DTC's ("Diagnostic Trouble Codes" or Fault Codes). VAG-COM shows the DTC numbers and also decodes each DTC into meaningful text.

At top of the screen, you have the VAG Number and Component number as shown on the Open Controller screen.

The **Display Freeze Frame Data** checkbox adds Freeze Frame data for Fault Codes on control modules using the KWP-2000 protocols. Note: Not all control modules fully support this; very few cars can currently handle freeze-frame data using the VAG proprietary protocols. In vehicles that do not support Freeze Frame, that checkbox will not be present.

VAG-COM tells you how many fault codes have been found and displays each of them. The 5-digit or 7-digit number is a standardized VAG fault code, which can be searched in the Factory Repair Manuals. The text is a description of the part and failure mode. The letter and number combination in parentheses is the DIN Component Identifier. This is followed by elaborators describing the condition of the fault. The second line contains the P-code, or generic OBD-II code (if it exists, there are thousands of VAG codes without generic OBD-II equivalents).

Fault Codes cont.



[Print Codes] will print a Fault Code Report. If your PC is not connected to a printer when this button is pressed, be sure to use Windows to set the printer to "Work Off-Line" first! Later, when you connect the PC to a printer, un-check "Work Off-Line" to print the report.

[Copy Codes] will copy your fault codes to Windows Clipboard. Once you have pressed the Copy Codes button, you may paste the results into the application of your choice, such as MS Word or Notepad.

[Save Codes] will save a plain-text Fault Code Report to the VAG-COM/Logs directory of your PC.

[Clear Codes - 05] will erase the DTC's from the Control Module's memory. Be aware, this does not fix the problem that caused the fault! DTC's should only be erased after correcting the condition(s) that caused them in the first place. Note: There is no way to erase individual DTC's while leaving others alone. This is not a limitation in VAG-COM. It's just the way the VAG protocols work.

[Done, Go Back] takes you back to the main Control Module screen where you can select other functions.

VAG-COM - Measuring Blocks (VAG 1551/1552 function 08)



On this screen, you can read all sorts of data from the Control Module in real-time.

Use **[Up]** and **[Dn]** to scroll through the available groups (000 - 255 on most Control Modules). Don't become discouraged when you find some that say "ERROR: Group xxx Not Available" or if you find some groups where the fields are all blank. Most 1996 and newer ECU's have Groups in the 200 range, but there are often "gaps" in the numbers.

You can also type a Group number into the Group box and click **[Go!]**

You can **[Log]** the data from the measuring blocks. For more information see the Data Logging section.

[Switch to Basic Settings] can be used to go to Basic Settings for the Group that is currently being displayed. This should be done only under guidance from the Service Manual or when following some other documented procedure. For more information see the Basic Settings section.

Note: Multiple Groups are not permitted in Basic Settings. The **[Switch To Basic Settings]** button is intentionally disabled if you have groups "running" in the second and third rows. To stop a running group, click on the box that displays the group number (as though you wanted to enter a new number). The button is also disabled on controllers using KWP-2000. On those, you need to go directly to the Basic Settings screen.

The data presented in each **Measuring Block** Group varies greatly from Control Module to Control Module and between different models and years. Some groups are documented in the Factory Repair Manuals, but many are not. Feel free to explore the Control Modules in your car by scrolling through all the Groups. You can't hurt anything with the Measuring Blocks function!

Measuring Blocks cont.

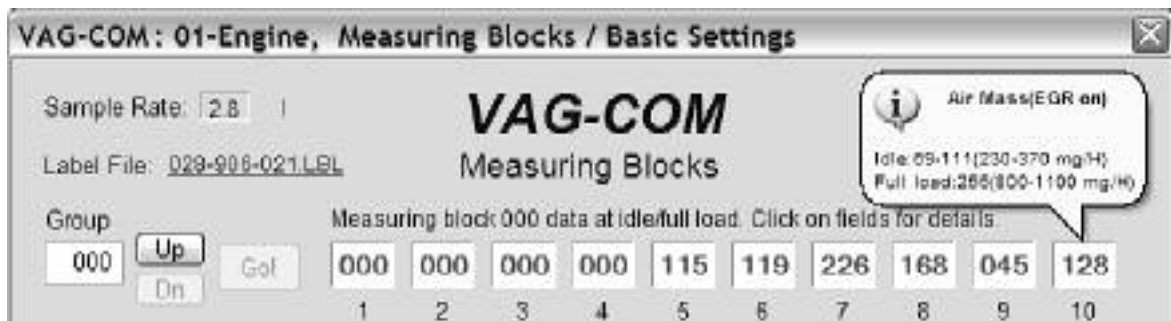
VAG-COM will attempt to "scale" the raw data coming from the Control Module into real-world units like degrees C, km/h, etc. At the present time, all scaling conversions are to metric units.

Note: Group 000 and any other group that displays 10 fields instead of 4 is an exception. No scaling is possible because the Control Module provides no "Data Type" information with the data for these. Groups of this type can only be displayed in the top row of the screen.

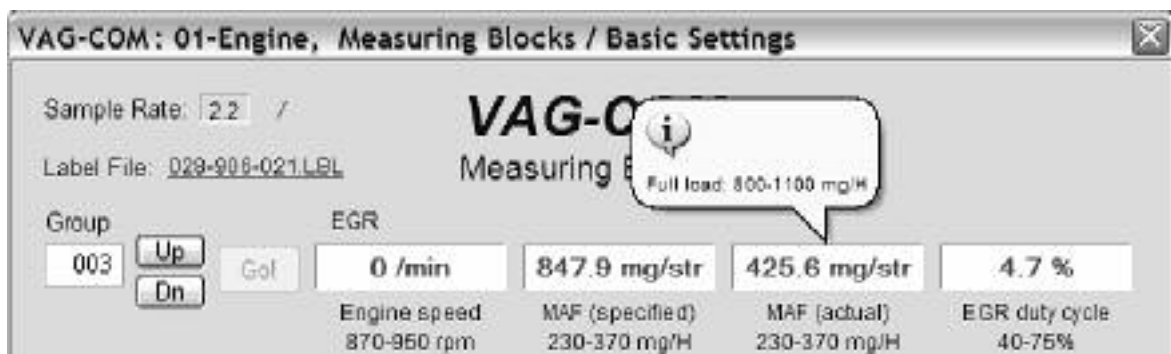
VAG-COM also tries to elaborate as much as possible what the data means. Unfortunately, the "Data Type" information coming from the Control Module is not that precise. For example: VAG-COM can tell that a particular field contains a Temperature, but the data from the Controller doesn't tell us whether this is the Coolant Temperature or the Intake Air Temperature.

To reduce the confusion, VAG-COM supports Label Files and will display the name of the Label File on the top left corner of the screen. If you click on the name of the Label File, the file will open in Notepad or whatever program you have set to handle *.LBL files. When a Label file for the Control Module you are looking at does not exist, VAG-COM will come up with an "educated guess" for what a particular Data Type means. The dealers' VAG-1551 and 1552 scan-tools do not provide any elaboration; they only show what's in the display fields!

Group 000 supports special Labels. Due to space constraints on the screen, these labels are displayed in a "balloon" when the user clicks on a field:



Label Files also allow a third label field to be defined for each of the normal measuring block fields. This label is displayed in a balloon when the user clicks on the field. The idea is to put "specified values" in this field:



Measuring Blocks cont.

Sample Rate: We can get just over 4.0 samples per second from our '97 VR6 ECU (single group) with the most aggressive protocol-timing settings. This ECU runs at 9600 baud. Most newer ECU's run at 10400 and should give proportionately more. Naturally, if two groups are being displayed simultaneously, the sample rate drops to around 2.0, and 3 groups simultaneously runs at around 1.3. Sample Rate will vary from controller to controller and the PC used will also have some effect. Some controllers (particularly AG4 transmissions and Digifant-III ECU's) use a "hybrid" data-type that requires reading a long header when changing group numbers. Viewing multiple groups still works with these data types, but the sample rate becomes extremely slow. If you see "Reading Header" all the time under the Sample Rate display, you'll know you've got one of these.

In Engine controllers using KWP-2000, there is a **[Turbo]** button in the top right of the Measuring Blocks screen. Pressing this button can significantly speed up sampling, for example over 30 samples per second when logging a single group in our Touareg. Once you have pressed **[Turbo]** you will remain in this High-Speed mode until you exit the Measuring Blocks screen:



[VAG-Scope] is a plug-in for VAG-COM that allows you to graph Measuring Group Information. See Appendix C for information on VAG-Scope.

Measuring Blocks cont.

Metric units		US Units	
52 km/h	1208 m	32 mph	3957 ft
0 to 100 km/h:	8.9 +- 0.12s	0 to 60 mph:	8.5 +- 0.16s
400m:	16.4 +- 0.12s, @145 km/h	1/4 mile:	16.4 +- 0.12s, @90 mph
90 to 120 km/h:	3.7 +- 0.12s	60 to 90 mph:	7.5 +- 0.16s
200 meters:	10.9 +- 0.12s, @114 km/h	660 feet:	10.9 +- 0.12s, @71 mph

Start Done, Go Back Save

When you have one or more measuring group with speed (km/h) in it, clicking on **[Acceleration]** will bring up the Acceleration Measurement window, which allows you to enter start and stop speeds and distances. After entering the values you want to measure, click **[Start]** and do your testing. When complete, click on **[Save]** to save a copy of your results to your C:\Program Files\VAG-COM\Logs directory.

Use **[Done, Go Back]** to return to the Open Controller screen.

You may also want to try the Advanced Measuring Blocks function (see the table of contents), which frees you from the grouping format of the Measuring Blocks function.

Warning!

If you wish to observe real-time data while driving the car, use a second person who is not in front of an active airbag!

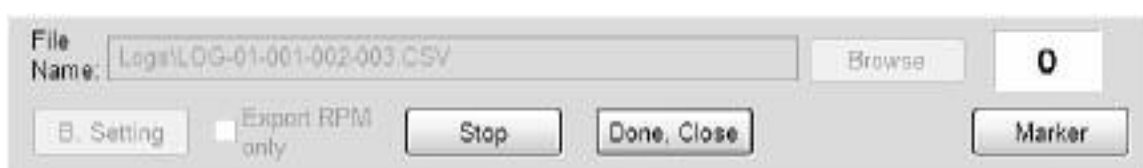
VAG-COM - Data Logging

You can log the data from the Measuring Blocks screen to a .CSV file. These files can be opened and analyzed with Excel or other spreadsheet applications.



While the Log Dialog is open;

[Start], **[Stop]**, and **[Resume]** can all be done with the same button. **[Start]** begins saving the data to a log file.



[Stop] discontinues the saving of data to a log file



[Resume] continues the saving of data to a log file.

Data Logging cont.

Export RPM Only when checked will record only RPM from the first field and will not record other fields. Also, this will only record RPM values that are non-zero. This feature can be useful if you are logging to output the file to a spreadsheet or other third party software

The **[Marker]** function places a sequential number in the file when you click the Marker button. This can be helpful for data analysis.

The **[Browse]** button allows you to specify the location for your logs. By default, Log Files will be placed in the LOGS sub-folder in your PC's VAG-COM directory.

By default, the name of the log file will be the controller number followed by the number for each group number that you are logging. The name can be changed to anything you'd like. If you re-use an existing filename, your new data will be appended to that file.

Switch to Basic Settings is not currently available while logging (but may be added later). However, you can start a log while you're in Basic Settings. If VAG-COM keeps insisting that it can't open a Log file, you're probably missing the LOGS folder and should re-install VAG-COM.

Example using Microsoft Excel:

1. Choose the Measuring Block(s) that you want to view.
2. Click the **[LOG]** button
3. Use default file name if desired. It will append the old file if you use a particular name more than once.
4. Click **[Start]**
5. Drive the car through the tests that you want to perform
6. Click **[Stop]**
7. Click **[DONE]** when you're finished logging data.
8. Open Microsoft Excel
9. Click File->Open (change filetype to all *.*)
10. Locate the *.csv file that you created with VAG-COM
11. With mouse select the columns you want to graph.
12. Click the Chart Wizard button.
13. Select XY (Scatter) and click one of the formats that has lines.
14. The chart wizard will prompt you to name axes if you want.
15. Pick, for example, RPM values for the x-axis and IAT for the y-axis

You can also use the **[VAG-Scope]** plug-in for VAG-COM that allows you to replay LOG files. See Appendix C for information on VAG-Scope.

Warning!

If you're going to use VAG-COM while you're driving, please use a second person! Let one drive while the other observes the data, making sure the person holding the PC is not in front of an active airbag! Obviously, do not break any laws, speeding or otherwise while using VAG-COM!

VAG-COM - Single Reading (VAG 1551/1552 function 09)



This function allows you to look at real-time data from control modules that support it. However, the data stream coming from the control module gives NO CLUE what the data means or how to scale it into real-world values.

The only way to know what the values mean is to find a reference to this function in the Factory Repair Manual for your car.

This function is rare, but it is used, for example, with some OBD-I 2.8L 12V V6 engines.

The very name of this function annoyed us, so we added a twist. You can look at two channels of "Single Readings" at once!

Use **[Done, Go Back]** to return to the Open Controller screen.

Note: On the Open Controller screen, the Supported Codes button will appear in place of the Single Reading function in modules that support it, since the two functions are mutually exclusive.

VAG-COM – Supported Codes



Supported Codes function. On the latest control modules which have this capability, VAG-COM can show all DTC and Failure Mode combinations which a control module is capable of detecting, including the current status of each.

You can sort the results by selecting the radio buttons on the right side of the screen.

Use **[OK]** to return to the Controller Info / Select Function screen.

Note: On the Open Controller screen, the Supported Codes button will appear in place of the Single Reading function in modules that support it, since the two functions are mutually exclusive.

VAG-COM - View Readiness (VAG 1551/1552 function 15)



The Readiness Code is a set of 8 bits, each of which corresponds to one monitored emissions "system" in an OBD-II car. When all readiness bits show "pass", it means that all systems have been checked and that they pass the on-board tests.

Whenever you clear DTC's or remove power from the ECU, all readiness bits will be set to "fail". Most cars do not have all 8 systems, so as soon as you apply power again, the bits corresponding to systems that are not actually in the car will come up "Passed" again.

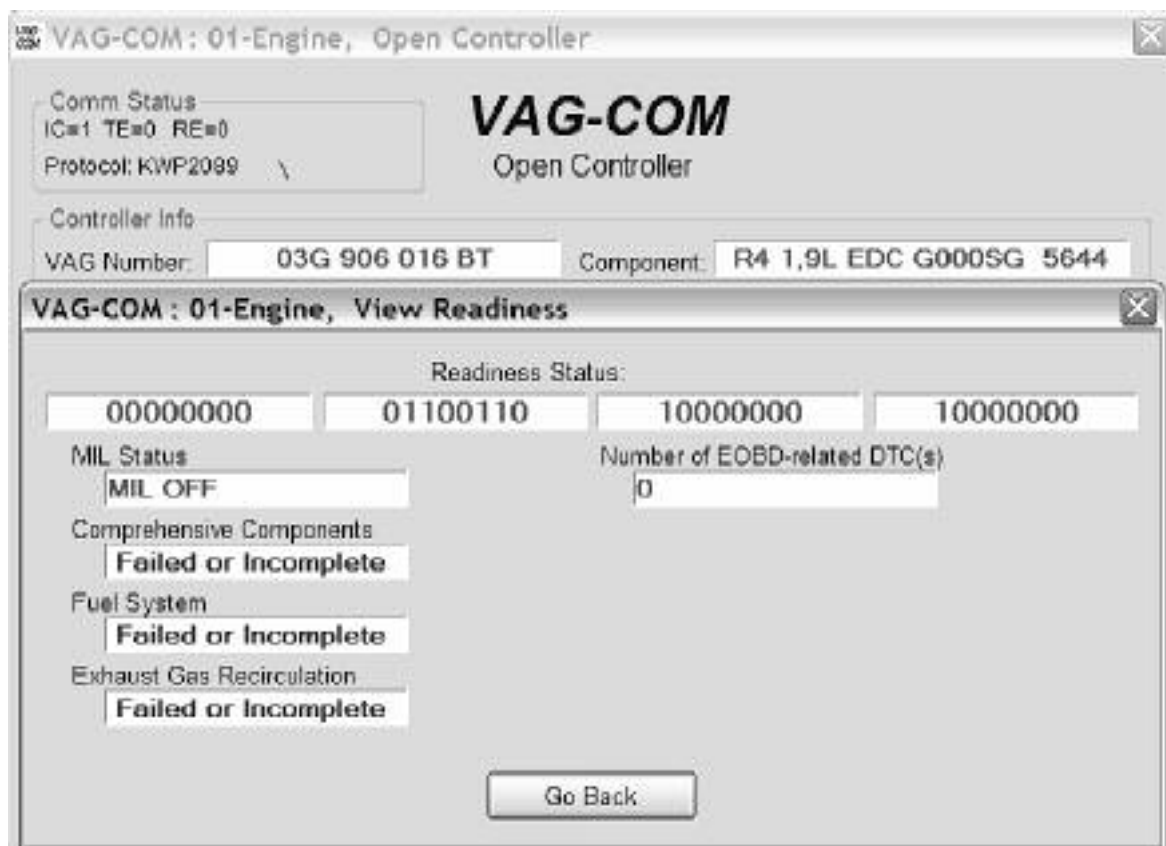
The above screen-shot was taken immediately after clearing the DTC's. You can see that this car does not support "monitors" for the EGR, Catalyst Heating, or Air Conditioning because this specific car does not have EGR or Catalyst Heating. It does have Air Conditioning, but a "monitor" is only required if the system uses ozone-depleting refrigerant (R12).

It takes a variety of specific driving conditions to "test" all the systems. It can be done in a short time using a very specific and complicated procedure found in the On Board Diagnostic section of the Factory Repair Manual for your engine. The alternative is just to drive the car for 2-3 days. Make sure you include at least one short highway trip and your Readiness Bits should all read "Pass" again.

Use **[Go Back]** to return to the Open Controller screen.

View Readiness cont.

VAG-COM also Decodes Readiness bits into meaningful data on modern TDI engines (a VAG-COM exclusive, not even the VAS-5051/5052 do this!):



Note:

This function is only available on Engine Controllers that are OBD-II compliant (all 1996 and newer US-Model gasoline engines).

Non-US models may not support this function even though they are otherwise OBD-II compliant. OBD-I did not require any "monitors".

12V 2.8L V6 engines may have readiness bits stored in or near Measuring Block Group 029.

VAG-COM - Advanced Identification (VAS 5051/5052 "Identification Services")

VAG-COM : 19-CAN Gateway, Advanced Identification

Advanced Identification		Misc	
Serial number	2100104213017E	Revision	08
Manufacturer number	017E	Identification	TF74035
Test stand number	1001	Date	13.02.04
Flash Status		Software	K2.6.9
Programming attempts	0	Hardware number	1K0907951
Successful attempts	0	Lot number	N/A
Flash Date	23.05.03	Type lock	N/A
Flash Tool Code	0	Immo IV challenge	N/A
Car Info		Engine Code	N/A
Chassis Number	N/A		

Go Back

Corresponds to VAS-5051/5051 "Identification Services"

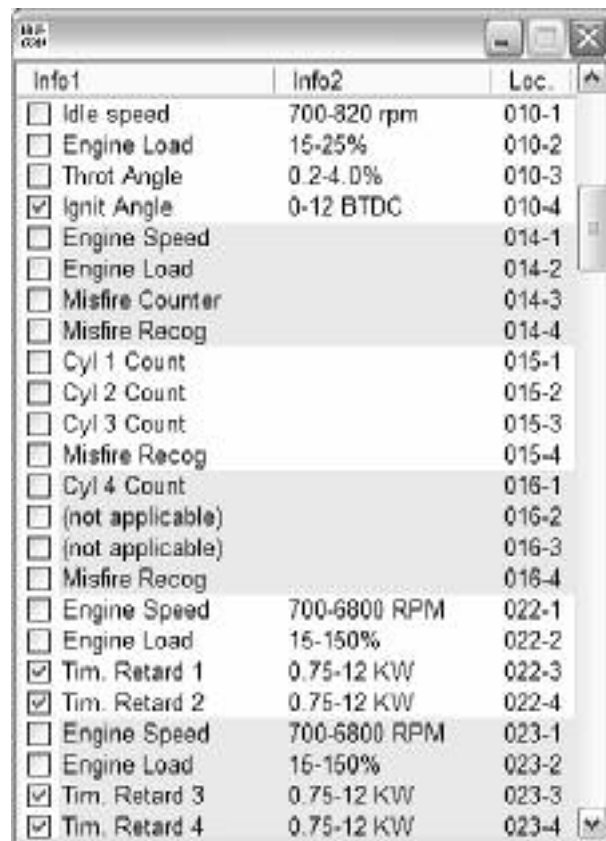
The Advanced ID function is only supported by control modules using the KWP-2000 and CAN Protocols!

Note: The amount of data appearing on this screen will vary based on what the control module supports. "N/A" in red means that data isn't available from that module. Some fields (like Chassis Number) may be blank if the module has never had a chassis number "installed".

You can use the small [←] and [→] buttons under Software to get version information for various portions of the firmware in the control module.

Use [Go Back] to return to the Open Controller screen.

VAG-COM - Advanced Measuring Blocks



Advanced Measuring Blocks con't.

This function expands on the Measuring Blocks function and lets you select up to 12 measuring values from as many as 12 different groups from a selection dialog that shows the contents of the measuring values. This function is available only when a label file exists for the control module being accessed.

VAG-COM: Acceleration measurement

VAG-COM
Acceleration Measurement

Metric units

52 km/h 1208 m

0 to 100 km/h: 8.9 +- 0.12s

400m: 16.4 +- 0.12s, @145 km/h

90 to 120 km/h: 3.7 +- 0.12s

200 meters: 10.9 +- 0.12s, @114 km/h

US Units

32 mph 3957 ft

0 to 60 mph: 8.5 +- 0.16s

1/4 mile: 16.4 +- 0.12s, @90 mph

60 to 90 mph: 7.5 +- 0.16s

660 feet: 10.9 +- 0.12s, @71 mph

Start Done, Go Back Save

When you have one or more measuring group with speed (km/h) in it, clicking on **[Acceleration]** will bring up the Acceleration Measurement window, which allows you to enter start and stop speeds and distances. After entering the values you want to measure, click **[Start]** and do your testing. When complete, click on **[Save]** to save a copy of your results to your C:\Program Files\VAG-COM\Logs directory.

Sample Rate:

The frequency that the data is updated is determined by the controller in the vehicle. Selecting a greater number of different Groups will result in slower sampling. This function does not currently support the [Turbo Mode] that is found in Measuring Blocks when reading Engine controllers that run KWP-2000.

[VAG-Scope] is a plug-in for VAG-COM that allows you to graph Measuring Group Information and display customizable virtual gauges. For more information, see the VAG-Scope page.

You can **[Log]** the data from the Advanced Measuring Blocks screen. For more information see the Data Logging page.

Use **[Done, Go Back]** to return to the Controller Information screen.

Warning!

If you wish to observe real-time data while driving the car, please use a second person! Let one drive while the other observes the data, making sure the person holding the PC is not in front of an active airbag!

Note: You may also want to try the Measuring Blocks function, which accesses the same data but in a different format.

VAG-COM - Login (VAG 1551/1552 function 11)



The Login Function must be used on some (but not all) Control Modules before you can Recode or change Adaptation values. On others, it "enables" certain features like cruise control. Valid Login codes can be found in the Factory Repair Manual for your car.

If working on an Immobilizer, select **[Use 7-digit PIN/SKC]** to enter a 7-digit Secret Key Code. This function is described in its own section.

Balloons: VAG-COM can show Login "charts" when appropriate information is available in a Label File for the control module in question. The balloon will appear when the mouse cursor is hovered over the Enter Login Code field.

Use the **[Do It!]** button to save the Login and return to the Select Function Screen.

Use the **[Cancel]** button to cancel the Login and return to the Select Function Screen.

Login cont.

The following warning appears in the upper right corner of the screen if a session is disconnected after you have done a Login. You will need to exit the Controller and do another Login.



The most common cause of this is the use of an incorrect login code or a 7-digit PIN/SKC based on an incorrect Immobilizer ID or incorrect data entered in the 7-digit dialog.

VAG-COM - 7-digit PIN/SKC



The 7-digit PIN/SKC (Secret Key Code) dialog is used for Key Matching and Immobilizer 3 Adaptation.

You must enter the following information:

- **7-digit SKC that the dealer generated for your exact Immobilizer ID Number.**
- **Date on which the SKC was *GENERATED BY THE DEALER*.**
- **Workshop Code (WSC) for the dealer that generated the SKC.**
- **Importer Number for the dealer that generated the SKC.**

The 7-digit SKC is useless without **ALL** of these items.

When you have filled in all of the data click **[OK]**. If any of the entered data does not make sense, the following message may appear:



When you have successfully submitted the 7-digit PIN/SKC, you are taken back to either the Login or Adaptation screen (wherever you were when you clicked on **[Use 7-digit PIN/SKC]**). Now, you should have "XXXXX" in Login or Adaptation value.

7-digit PIN/SKC cont.

Notes:

Important: Please see the FAQ number 4.15 for information on SKC availability.

Unlike the factory diagnostic tools, with VAG-COM, the same PIN can be used for a particular car at any time in the future, as long as you keep track of the PIN, along with the Date on which the PIN was *GENERATED BY THE DEALER*, the dealer's Workshop Code (WSC) and the Importer number.

If you obtain a 7-digit SKC, but the dealer has not provided the WSC, look at the window stickers of vehicles on the dealer's lot. The dealer number will be listed next to the name and address of the dealer. In the US, the dealer number will be a 4 followed by five more digits, for example 401742. To obtain the WSC, delete the 4 and simply use the remaining five digits, 01742 in the above example.

The Importer number should be:
444 for all dealerships in the US
999 for all dealerships in Canada
995 for all dealerships in France

Use the **[OK]** button to save the 7-digit information and return to the Login or Adaptation screen

Use the **[Cancel]** button to return to the Login or Adaptation screen without saving.

VAG-COM - Basic Settings (VAG 1551/1552 function 04)



This screen is presented when a Control Module is in Basic Settings mode.

Basic Settings mode is very similar to Measuring Blocks, and the contents of each display group is the same. The difference between the functions is that the Control Module may try to perform various calibrations while in Basic Settings mode.

Warning!

You should refer to the Factory Repair Manual for your particular car (or some other documented procedure) before "playing" with the Basic Settings function. Failure to follow the proper procedures can result in serious damage to the vehicle.

Although you can use the **[Up]** and **[Dn]** buttons to scroll through the available groups just like on the Measuring Blocks screen, this is probably not a good idea since you may put the Controller into Basic Settings for a Group that you did not intend.

You can also enter a Group number directly and click **[Go!]**

[Switch to Meas. Blocks] will switch back to the passive (and "safe") Measuring Blocks mode.

Notes:

Multiple Groups are not permitted in Basic Settings. The data presented in each **Basic Settings** Group varies greatly from Control Module to Control Module and between different models and years. Some groups are documented in the Factory Repair Manuals, but many are not.

Basic Settings cont.

VAG-COM also tries to elaborate as much as possible what the data means. Unfortunately, the "Data Type" information coming from the Control Module is not that precise. For example: VAG-COM can tell that a particular field contains a Temperature, but the data from the Controller doesn't tell us whether this is the Coolant Temperature or the Intake Air Temperature. To reduce the confusion, VAG-COM supports Label Files and will display the name of the Label File on the top left corner of the screen. When a Label file for the Control Module you are looking at does not exist, VAG-COM will come up with an "educated guess" for what a particular Data Type means. The dealers' VAG-1551 and 1552 scan-tools do not provide any elaboration; they only show what's in the display fields! Basic Setting will display a popup balloon when the mouse is hovered over each value, if the Label File contains information for that field in that controller. See the Measuring Blocks section for more information.

Use **[Done, Go Back]** to return to the Open Controller screen.

The most common use for the Basic Settings function is to recalibrate the Throttle Body. Another common use for Basic Settings is to bleed the ABS Hydraulic Unit on newer cars. Please refer to a Factory Repair Manual for your car before attempting to do this!

You can begin and end a Data **[Log]** while in Basic Settings. See the next section in this manual for information on Data Logging.

Basic Settings in KWP-2000:



On Controllers using KWP-2000, there is an **[ON/OFF/Next]** button that allows you to initiate and exit Basic Settings while still being able to see the values in the measuring groups.

VAG-COM - Output Tests (VAG 1551/1552 function 03)



The Output Tests function is used to test a Control Module's Electrical Outputs (and the wiring that connects it to the various devices). Output Tests under KWP-2000 includes simultaneous measuring data when available from the control module in question.

To begin Output Tests, and to progress through each step, click **[Start/Next]**.

Notes:

The Outputs that can be tested and the sequence in which they become active is controlled strictly by the Control Module; this is not a function of the Diagnostic Tester. To find out which Outputs can be tested and the sequence in which they will become active, please refer to the Factory Repair Manual for your car.

Once the Test Sequence has been started, clicking **[Done, Go Back]** will take you back to the Open Controller Function Screen. **THE TEST SEQUENCE WILL STILL BE ACTIVE!**

Most Control Modules will permit the Output Test Sequence to be run only one time per session. If you run the Test Sequence to completion, VAG-COM will allow you to return to the previous screen without closing the session, but you may not be able to run the Output Test Sequence again. If you need to run the Sequence again, manually Close the Controller and re-start the session. On some cars, you must cycle the key OFF and ON or even start the engine (to clear the cylinders of fuel).

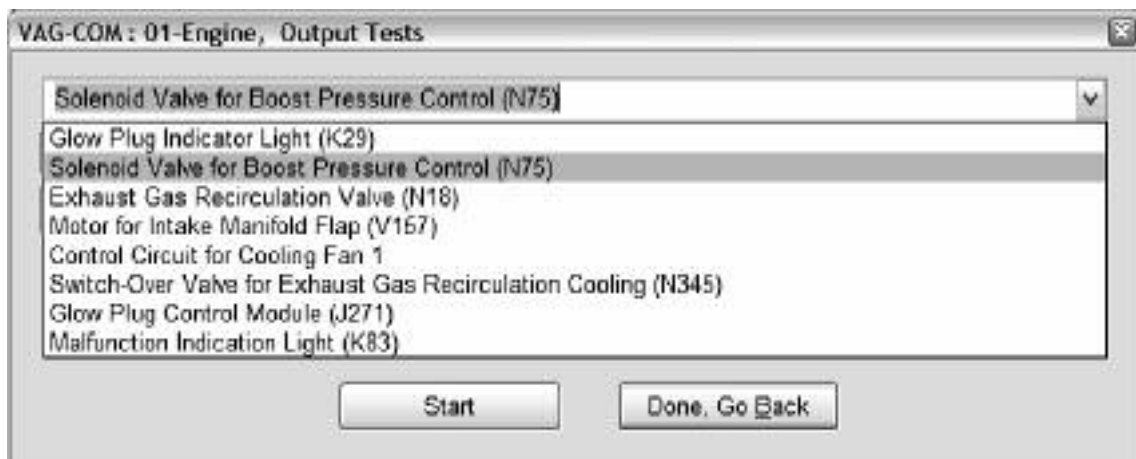
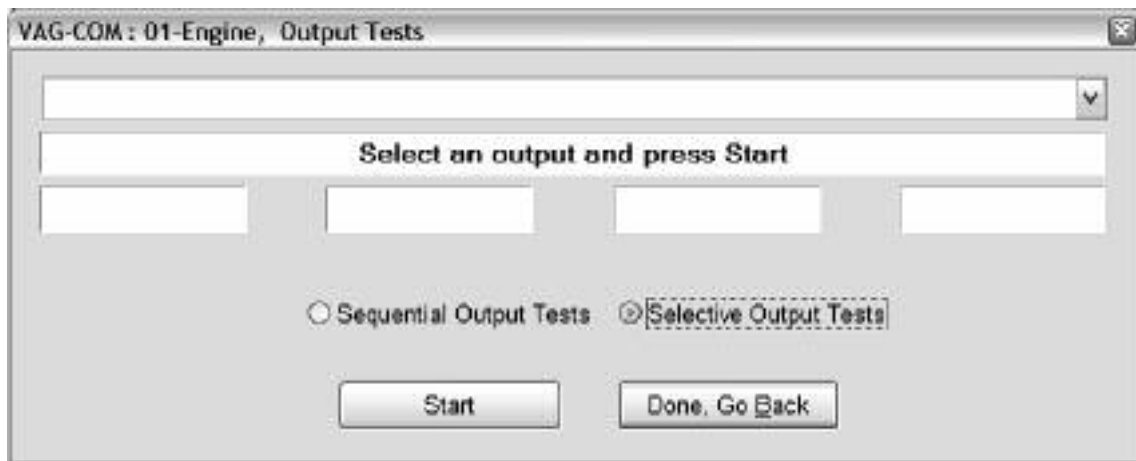
Some Outputs require additional action before they become active. Fuel Injectors are a common example. To activate a Fuel Injector, you must press (and in some cases release) the gas pedal. Exact details can be found in your Factory Repair Manual.

Output Tests cont.

On most systems, the Output Tests function is only available when the Engine is not running.

It is perfectly normal to see a "short to ground" message in the process of running Output Tests. The ECU identifies which output it is currently testing by sending a fault-code number. On many ECU's the full text for this fault code includes "short to ground". Why? Because one side of the actuator in question has 12V on it all the time and the ECU completes the circuit (and turns the actuator on) by pulling the other side to ground.

Selective Output Tests. On those modules which support it, this is a more sophisticated version of the traditional (sequential) Output Test function. It allows the user to select a particular output and activate it directly without going through a pre-defined sequence to get there. Some modules have outputs which can only be tested this way. Selective Output Tests *requires* supporting data in a label file. There is no way to efficiently query a control module to find out which outputs are supported.



Output Tests cont.



Warning:

Do not use the Output Tests function on any system while the car is in motion! Running Output Tests on the ABS brake system can temporarily disable the brakes entirely and cause individual wheels to lock and unlock.

We strongly suggest you refer to the Factory Repair Manual for your specific car before running Output Tests on any Control Module so you will know what to expect!

If you try to perform Output Tests on an Airbag controller, the following warning will pop up:



For example, in the VW Touareg, a specific procedure must be performed to be able to start the vehicle if Output Tests on the Airbag Controller have been performed.

Use **[Done, Go Back]** to return to the Open Controller screen.

VAG-COM - Recode or Long Coding (VAG 1551/1552 function 07)



Recode is used to set various options in a Control Module.

Warning!

You should refer to the Factory Repair Manual for your particular car (or some other documented procedure) before attempting to Recode a Control Module. At the very least, write down the original values. There is no other way to "undo" or restore the original values if what you're trying to do doesn't work out.

Note:

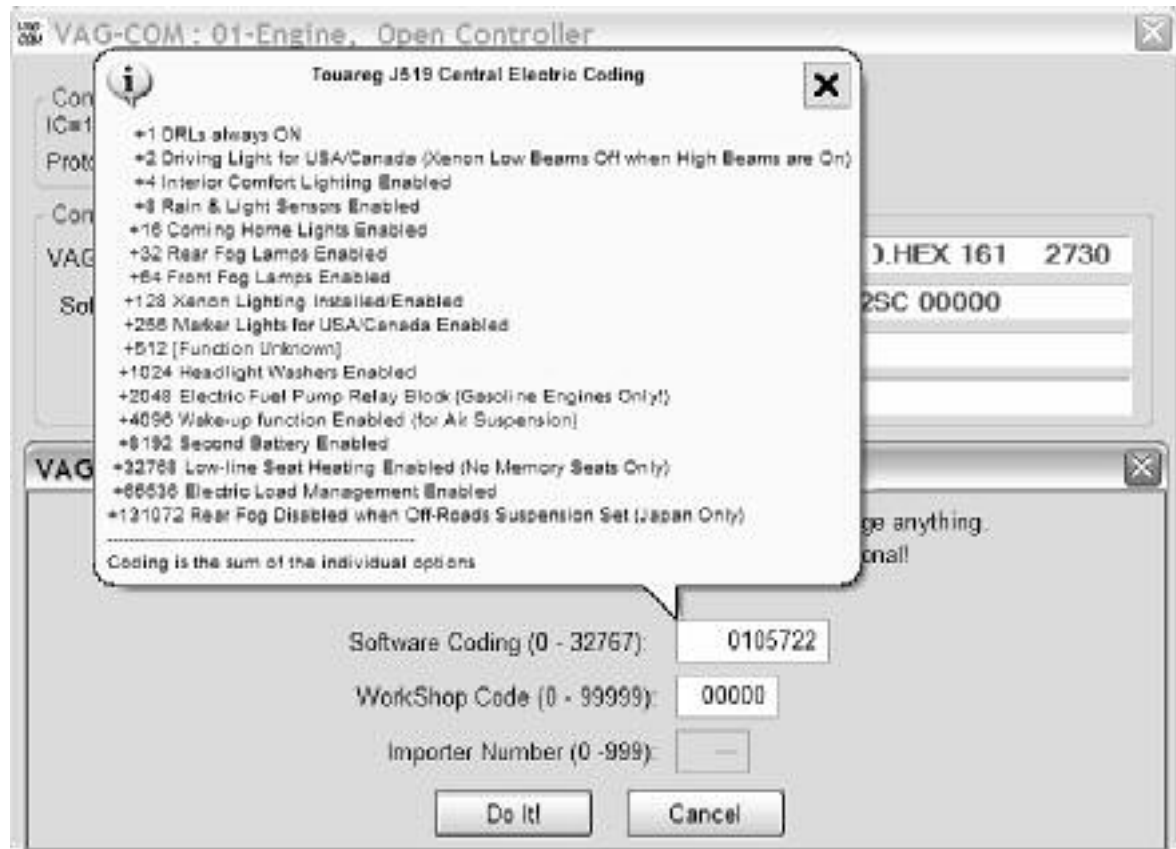
Some Modules require a valid Login before you can re-code them.

A feature unique to VAG-COM: You can leave the WorkShop Code unchanged, or enter any workshop code you desire. Certain other programs always leave a tell-tale WSC when you re-code a module.

The Importer Number is only relevant for recoding controllers that use KWP-2000. By default, this will remain unchanged unless you have set up an Importer Number in the Options screen.

Recode cont.

Up to 20 lines of coding chart data can be included in a Label File. This data is shown in a balloon on the coding screen:



When coding new Airbag Modules in many VW models, VAG-COM can "Suggest" an appropriate Coding value. Disclaimer: We cannot guarantee that the coding which VAG-COM may suggest will be correct, but there should be no harm in trying it. If it's not correct, the control module should simply refuse to accept it and the coding will remain at 00000.



Recode cont.

In the case where VAG-COM would offer Airbag module coding suggestions but cannot determine the Index automatically, VAG-COM gives you the ability to manually enter an Index (found on the Airbag controller sticker or work order) to get the suggested coding.



Long Coding. This function is needed to Recode some control modules (especially Gateways) in the newest cars that use CAN for diagnostics. Due to the complexity of Long Coding strings (up to 255 bytes of hexadecimal data) we've accommodated (and urge) the use of Copy & Paste in this function:

Coding of Slave Modules. On the latest cars, many "slave" modules are codeable. The coding screens (both regular and "long") now present a drop-list of available modules which can be selected for coding:



Recode cont.

VAG-COM: 19-CAN Gateway, Open Controller

Comm Status
IC=1 TE=0 RE=0
Protocol: CAN /

VAG-COM
Open Controller

Controller Info
VAG Number: Component:

VAG-COM: 19-CAN Gateway, Recode Module

Please write down the original values before attempting to change anything.
Incorrect Coding can make a Control Module non-functional!

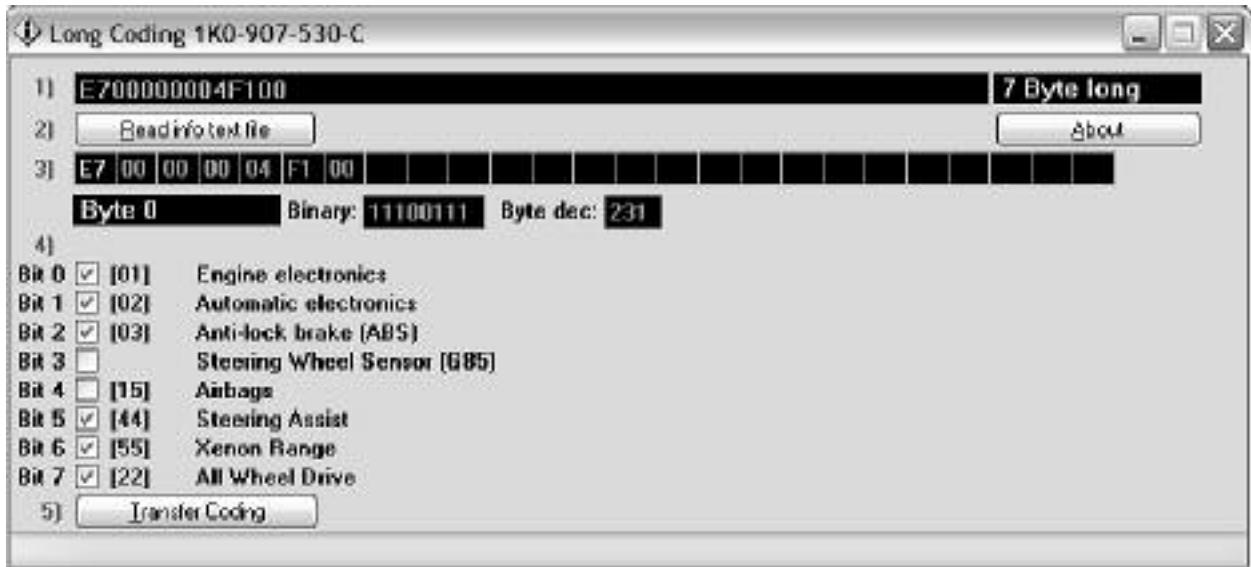
Current coding:

New coding:

WorkShop Code (0 - 99999): Importer Number (0 -999):

Recode cont.

Long Coding Helper is used with applications such as Niels Ezerman's excellent LCode.exe (included with this distribution of VAG-COM):



Use the **[Transfer Coding]** button to send the coding from LCode to the New coding section of the Long Coding Screen.

Use the **[Read info text file]** button to pull up a helper file if one has not automatically been loaded.

Use the **[Do It!]** button to save the new Soft Coding to the controller and return to the Open Controller Function screen.

Use the **[Cancel]** button to return to the Open Controller Function screen without saving.

VAG-COM – Adaptation / Long Adaptation (VAG 1551/1552 function 10)



The Adaptation function allows you to alter certain values and/or settings in control modules that support it.

Warning!

You should refer to the Factory Repair Manual for your particular car (or some other documented procedure) before "playing" with the Adaptation function. However, many available Adaptation Channels are totally undocumented!

You can use the **[Up]** and **[Dn]** buttons next to *Channel Number* to scroll through all 99 possible channels, or you can manually enter a channel number and click **[Read]**. If a channel exists, VAG-COM will show you the *Stored Value*. If a channel does not exist, the *Stored Value* will show as "N/A". Other data the controller may or may not send will be decoded and shown in the four display fields at the top of the screen.

Once you have reached a channel of interest, you can use the **[Up]** and **[Dn]** buttons next to *New Value* to incrementally change the value. Or you can directly enter a *New Value* and click **[Test]**. This will tell the controller to temporarily use the new value so you can evaluate its effects.

When you are satisfied with the effect of a *New Value*, you can store it in the Controller permanently by clicking **[Save]**.

Adaptation cont.

Notes:

Channel 00 is a special case. Performing a **[Save]** to Channel 00 resets all adaptation values to their original factory defaults. This only works in controllers that support this function, see your Factory Repair Manual to find out if this procedure applies to each controller in your vehicle.

Some Engine and Immobilizer controllers will require a valid Login before permitting you to **[Test]** or **[Save]** Adaptation values.

Values put in with **[Test]** but not Saved will persist until controller is powered-down.

Long Adaptation. Used/needed (for example) to balance the fuel injectors on Common-Rail TDI engines such as the BKN.

Label Files can support values and description for Adaptation channels. This help chart is displayed in a balloon:



Click **[Done, Go Back]** to return to the Open Controller Function Screen.

VAG-COM - Security Access Screen (VAG 1551/2 Function 16, KWP-2000 only)

The screenshot shows two overlapping windows from the VAG-COM software. The top window, titled 'VAG-COM: 01-Engine, Open Controller', displays the following information:

- Comm Status: IC=1 TE=0 RE=0
- Protocol: KWP2089
- VAG Number: 03G 906 016 BT
- Component: R4 1,9L EDC G000SG 5644
- Soft. Coding: 0000072
- Shop #: Imp: 124 WSC 45241
- Extra: (empty field)
- Extra: Gerat 63128

The bottom window, titled 'VAG-Com: 01-Engine, Security Access', contains the following text and controls:

Most Controllers only allow one access attempt. If an incorrect access key is entered, you will have to leave the ignition ON for at least ten minutes before trying again. Refer to Service Manual for a valid access key.

Enter security access key (0 - 99999): or

The Security Access Function must be used on some (but not all) KWP-2000 Control Modules before you can Recode or change Adaptation values. On others, it "enables" certain features like cruise control. Valid Login codes can be found in the Factory Repair Manual for your car.

Balloons: VAG-COM can show Security Access "charts" when appropriate information is available in a Label File for the control module in question. The balloon will appear when the mouse cursor is hovered over the Enter security access key field.

Security Access cont.

The Security Access Function supports 7-Digit SKCs. This is needed for Immobilizer Functions (such as key programming) on the latest vehicles like the Touareg:



For more information, see the section in this manual for the 7-digit PIN/SKC function.

Use the **[Do It!]** button to save the Login and return to the Open Controller screen.

Use the **[Cancel]** button to cancel the Login and return to the Open Controller screen

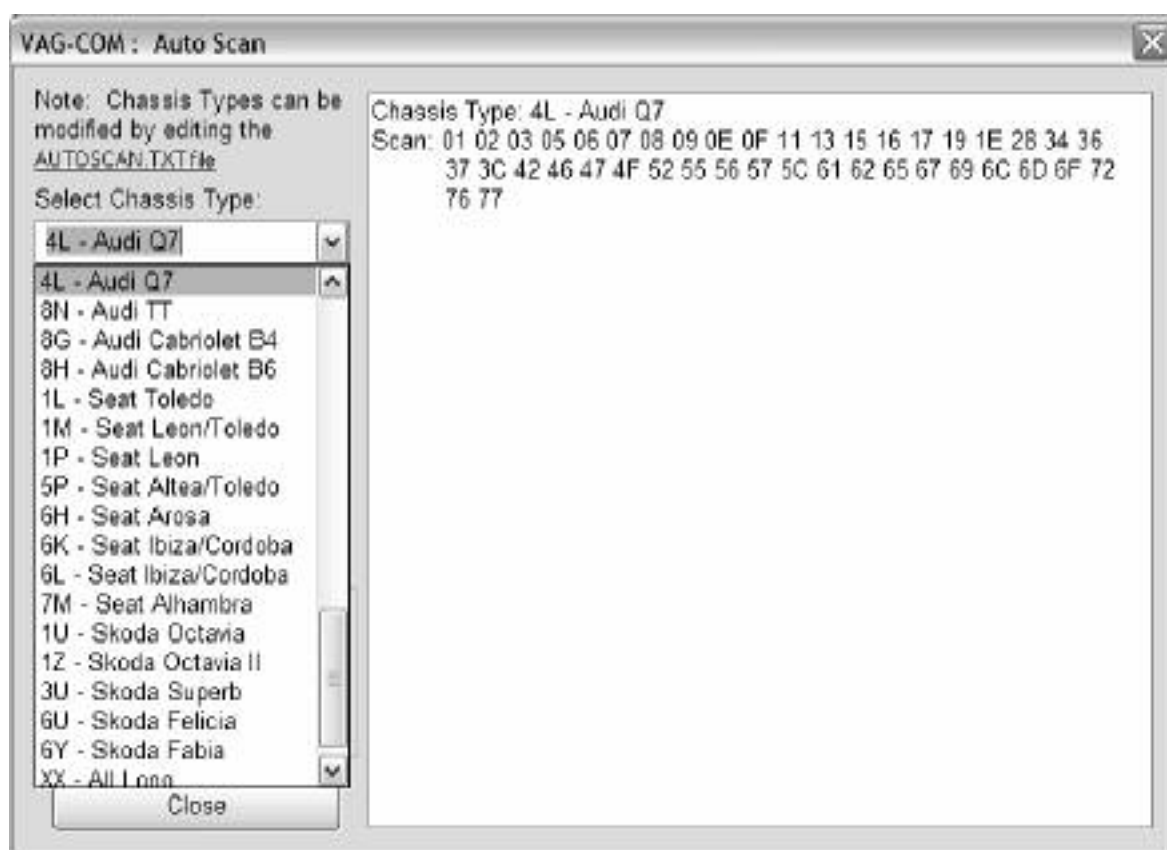
VAG-COM – Auto Scan (VAG 1551/1552 function 00)

This function scans each controller in the vehicle to retrieve controller information (VAG number, Component number, Soft. Coding, WSC, and fault codes).

First, you must **Select Chassis Type**:

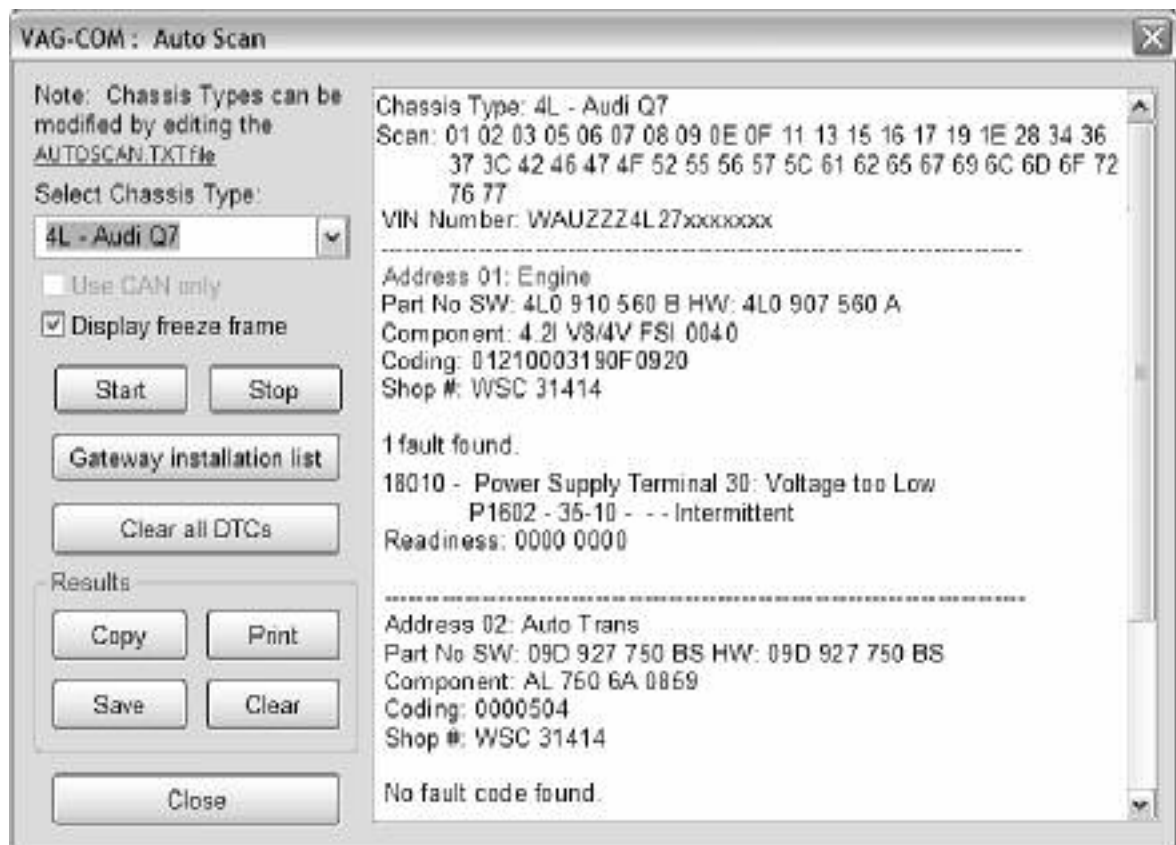
There are dozens of different control modules that exist across the entire range of VW/Audi vehicles. No one car has all Modules! Newer cars have more, older cars have fewer. Because of this, you must select a Chassis Type that contains only those modules that are plausible for a given chassis.

If you select **Auto Detect (CAN Only)** as the **Chassis Type** on newer cars which have a fully CAN-based diagnostic system, VAG-COM can automatically determine which modules are installed in a particular car and perform an Auto-Scan of exactly those modules. This can make the Auto-Scan considerably faster.



There is a file in the VAG-COM directory called AUTOSCAN.TXT, which contains all of the vehicle profiles. It can be edited by simply clicking on the hyperlink above the Chassis Type selection. This will open the file in your default Text editor (like Notepad) to create a custom profile for your vehicle. To help you figure out which controllers are in your car, you can run the Control Module Finder.

Auto Scan cont.



The **Display Freeze Frame Data** checkbox adds Freeze Frame data for Fault Codes on control modules using the KWP-2000 protocols. Note: Not all control modules fully support this; very few cars can currently handle freeze-frame data using the VAG proprietary protocols.

[Start]

This begins the Auto Scan. Be aware; this process can take several minutes. While the scan is running, VAG-COM will cycle through the Open Controller and Fault Code screens for each controller before returning to the Auto Scan screen. On newer control modules which have different Hardware and Software part numbers, Auto-Scan includes the Hardware Part Number as shown in the screenshots. Double-clicking on any of the Control Module names in **RED** will open the Fault Codes screen for that controller and allow you to clear the codes.

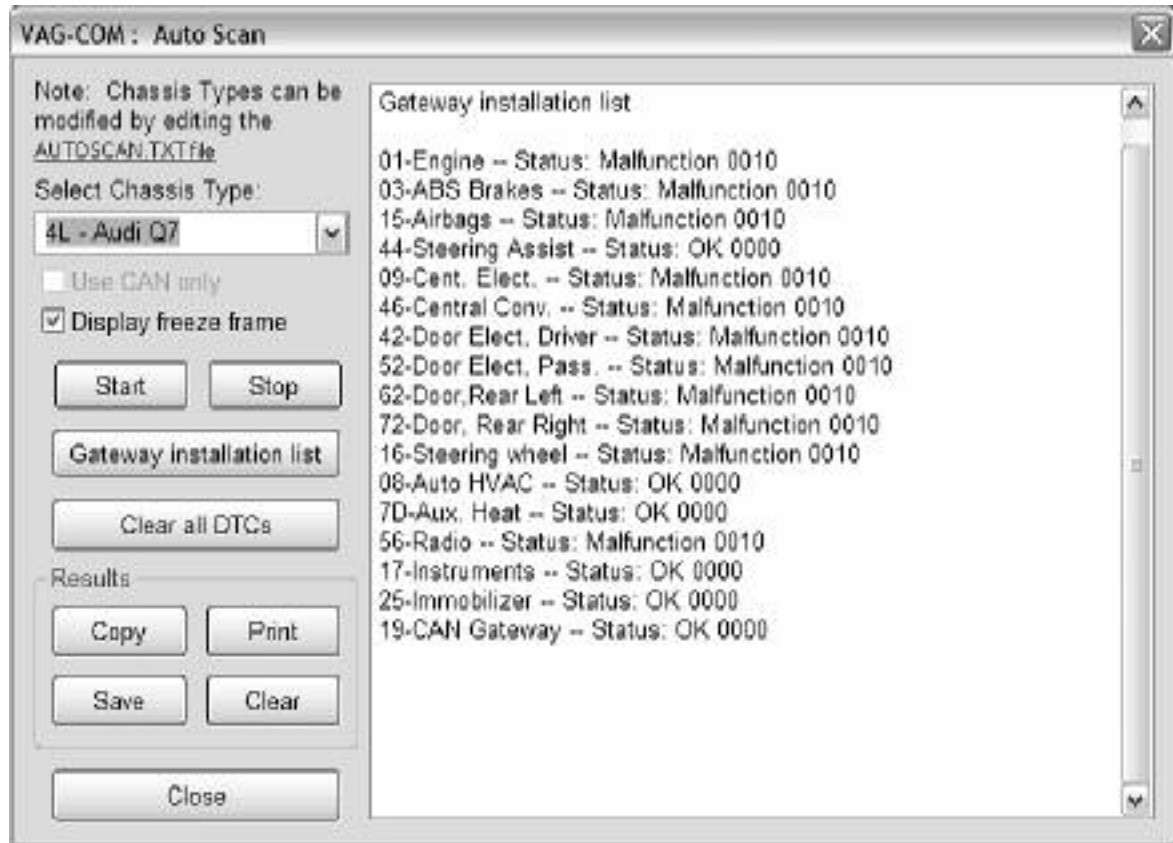
[Stop]

This stops the Auto-Scan.

Auto-Scan cont.

[Gateway Installation List]

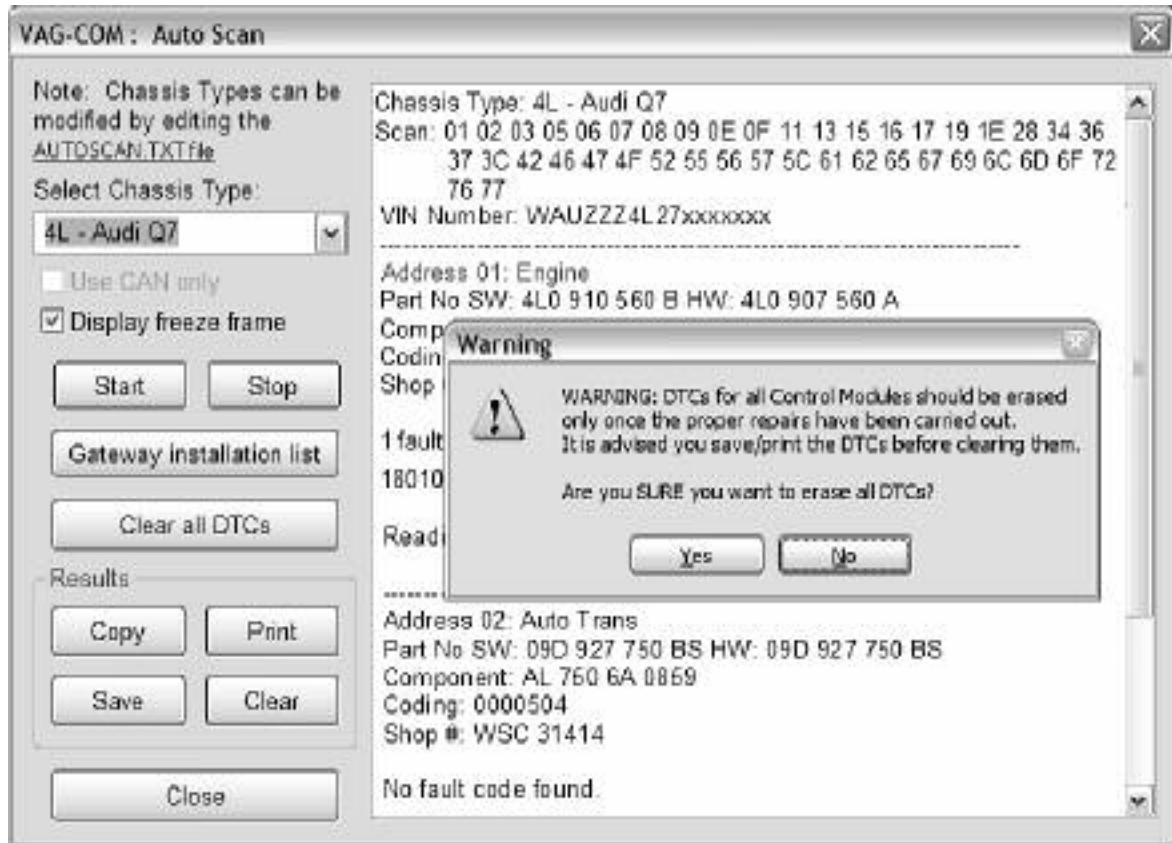
Only available only on Gateways in cars using a direct CAN connection for diagnostics This very *fast* function takes about 3 seconds to query the car's Gateway to find out what modules are installed in the car and what their status is. Any modules having fault codes should show a "Malfunction" and will be highlighted in **RED**. Double-clicking on any of the Control Module names in **RED** will open the Fault Codes screen for that controller and allow you to clear the codes. Modules are directly accessible from this screen by double clicking on the appropriate line. The following screen-shot is from an Audi Q7:



Auto-Scan cont.

[Clear All DTC's]

This function is only available with our HEX Interfaces and is implemented in two ways. On pre-CAN-Bus vehicles, VAG-COM will access each control module and clear DTCs from each one individually. On vehicles using CAN-Bus for diagnostics, VAG-COM performs this function without accessing all the control modules individually.



Automatic VIN retrieval in Auto-Scan from all Immo-3 (and newer) cars. VIN should be retrieved automatically from all cars that "know" their VIN.

Results:

[Copy]

If you close the Auto-Scan dialog, any data in its output box will be lost. If you would like to keep a record, click the **[Copy]** button first, then you can then paste the results into the application of your choice, such as MS Word or Notepad.

[Print]

This function sends the results to your printer.

[Save]

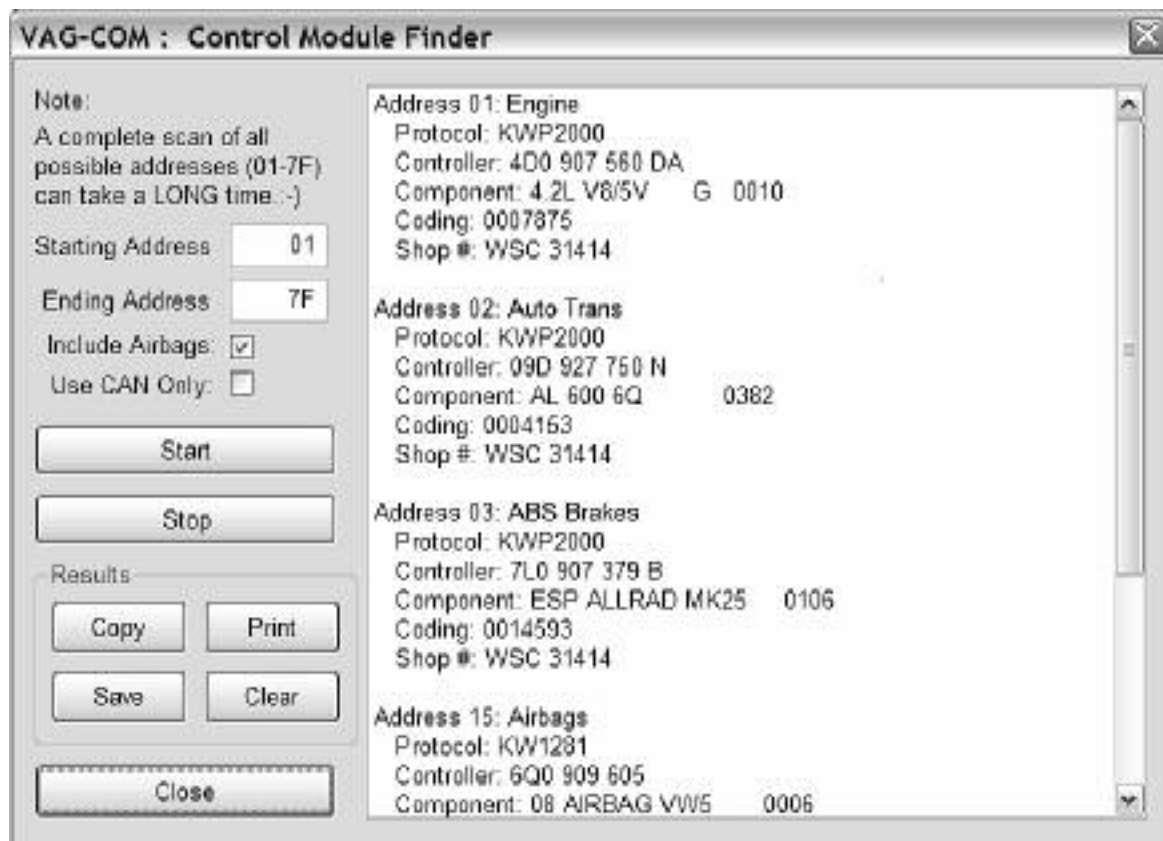
This function saves the results to a text file in our VAG-COM\Logs directory.

[Clear]

This erases your results. It does not clear any fault codes from any Controllers.

To return to the Main Screen, click **[Close]**

VAG-COM - Control Module Finder



This function cycles through each possible address in the vehicle, finding each controller and reporting its Address, Protocol, Controller VAG Number, Component Number, Soft. Coding, and WorkShop Code.

Note: No one car has all Modules! Newer cars have more, older cars have fewer.

If you check **Use CAN Only** then the Module Finder will not check for any modules on the K-line.

[Start] begins the finder. Beware; a "full" scan can take 45 minutes or more. Of course, you can scan selected address ranges.

[Stop] stops the finder.

Results:

[Copy] If you close the Auto Scan dialog, any data in its output box will be lost. If you would like to keep a record, click the **[Copy]** button first, then you can then paste the results into the application of your choice, such as MS Word or Notepad.

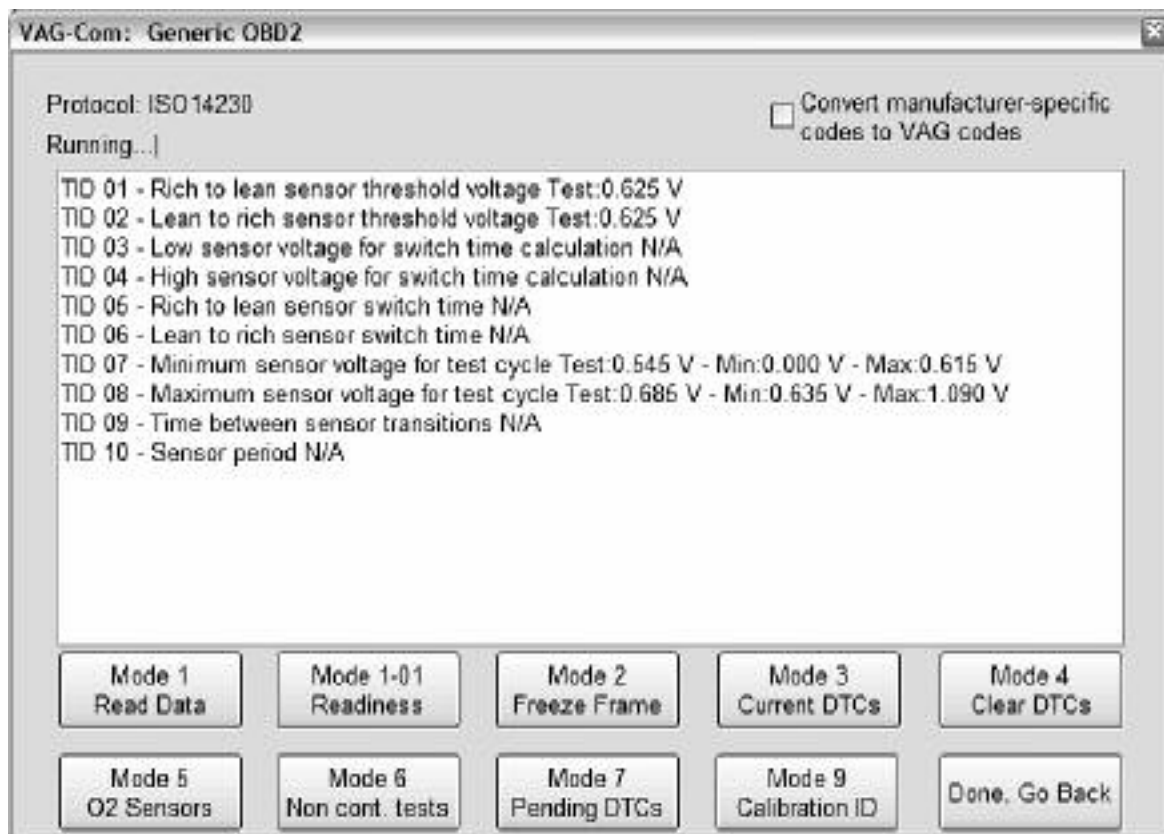
[Print] This function sends the results to your printer.

[Save] This function saves the results to a text file in our VAG-COM\Logs directory.

[Clear] This erases your results.

To return to the Main Screen, click **[Close]**

VAG-COM – Generic OBD2 (VAG 1551/1552 Address Word 33)



Generic OBD-II functionality. Because many of VW's recent factory repair manuals no longer have traditional 01-Engine "On Board Diagnostic" information and have replaced it with "Generic Scan Tool" data, this has become much more important than it was in the past. For now, we'll let the screens speak for themselves. Click each of the Mode buttons to for each OBD-II function.

Generic OBD-II functionality is "Supported" only on VW, Audi, Seat, and Skoda cars. It will likely work on many other brands of cars. We'd be happy to receive feedback as to what other brands and models of cars it does and does not work on, however, we do not feel obligated to make it work on other manufacturer's cars.

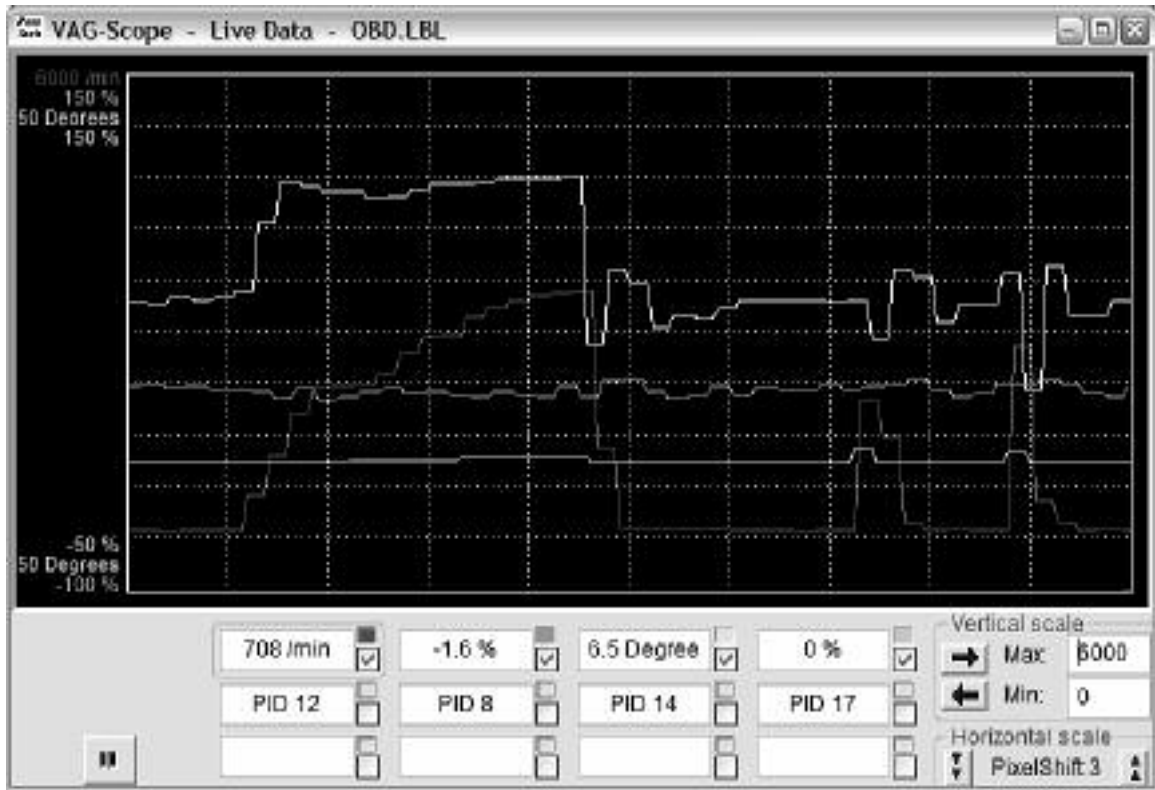
Generic OBD-II functionality is limited to cars using ISO 9141-2 ("CARB"), ISO 14230 ("KWP-2000") and ISO-15765 ("CAN") protocols. Our interfaces do not support the SAE J1850-VPW and J1850-PWM protocols used by most US-market GM and Ford products, so this cannot work on those cars. Most early (1996-2000) OBD-II compatible Chrysler cars used ISO-9141-2. Many newer Chrysler cars use SAE-J1850 and are incompatible. Most European and Asian cars use ISO and should be compatible. In US models, Generic OBD-II compatibility was required as of model year 1996. In Canada, 1998. In the European Market, 2001 (gasoline-powered) and 2004 (diesel-powered).

Please see the FAQ question 1.10 in Appendix B:
What's the difference between VAG-COM and an OBD-II Scan-Tool?

To return to the Main Screen, click **[Done, Go Back]**

Generic OBD2 cont.

VAG-Scope is able to graph generic OBD-2 Mode 1 data. See the VAG-Scope section in Appendix C for more information.



VAG-COM - Applications



Transport Mode

On vehicles using CAN for diagnostics, there is a special Transport Mode that is used by the factory to put the cars into a "sleep" to conserve battery charge during long periods of inactivity. These functions only work on Golf V based cars, B6 Passat, and D3 Audi A8.

[Activate Transport Mode]

Clicking this button will put applicable vehicles into Transport Mode, shutting down most systems.

[De-activate Transport Mode]

Clicking this button will "wake up" applicable vehicles from Transport Mode, powering up most systems.

In the B7 Audi A4, Transport Mode works a little differently. To take the car out of transport mode, go into

[Select]

[17 Instruments]

[Adaptation - 10]

Enter channel 99

Put in a new value of 0

[Test]

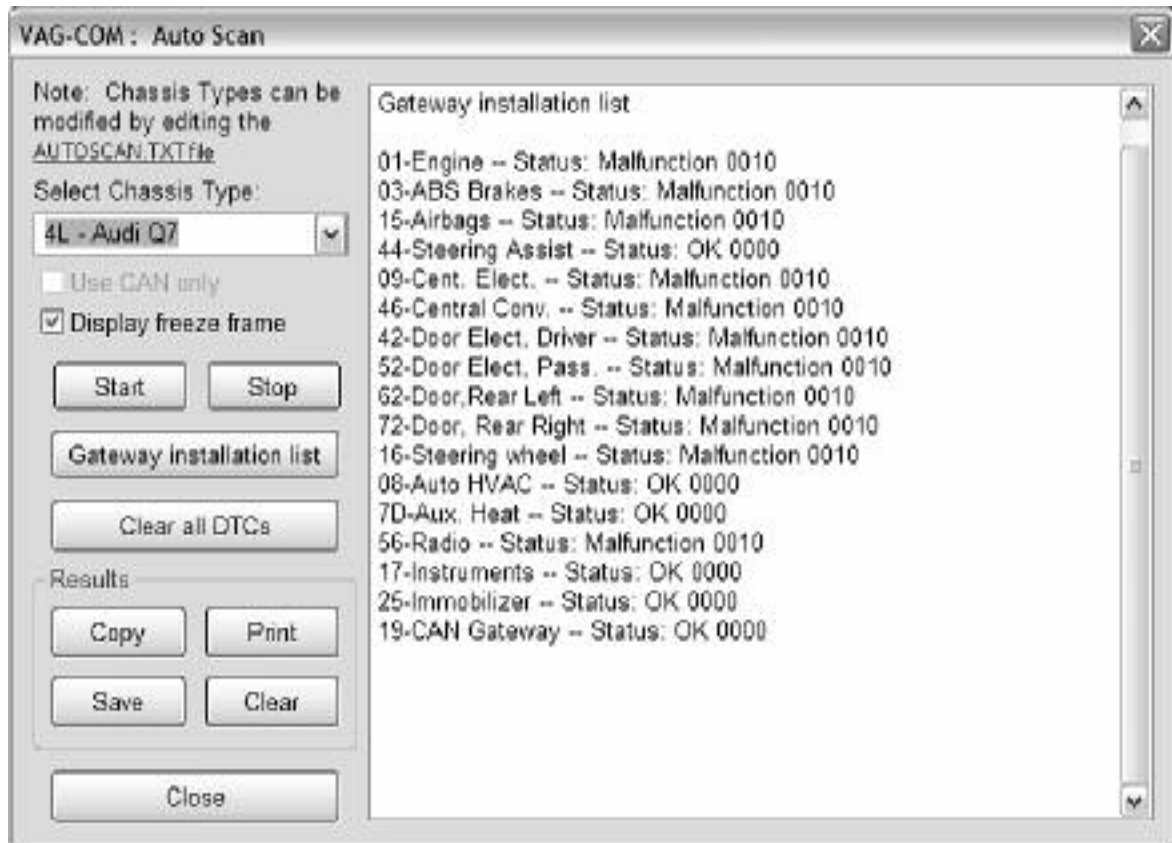
[Save]

Applications cont.

Check for and erase faults

[Gateway Installation List]

Only available only on Gateways in cars using a direct CAN connection for diagnostics (like the new A8 and all Golf-5 chassis cars). This *very fast* function takes about 3 seconds to query the car's Gateway to find out what modules are installed in the car and what their status is. Any modules having fault codes should show a "Malfunction" and will be highlighted in **RED**. Double-clicking on any of the Control Module names will open that controller. The following screen-shot is from a Golf-5 in Europe:



[Clear All DTC's]

On vehicles using CAN-Bus for diagnostics, VAG-COM clears all of the fault codes in all control modules in the car without accessing all the control modules individually.

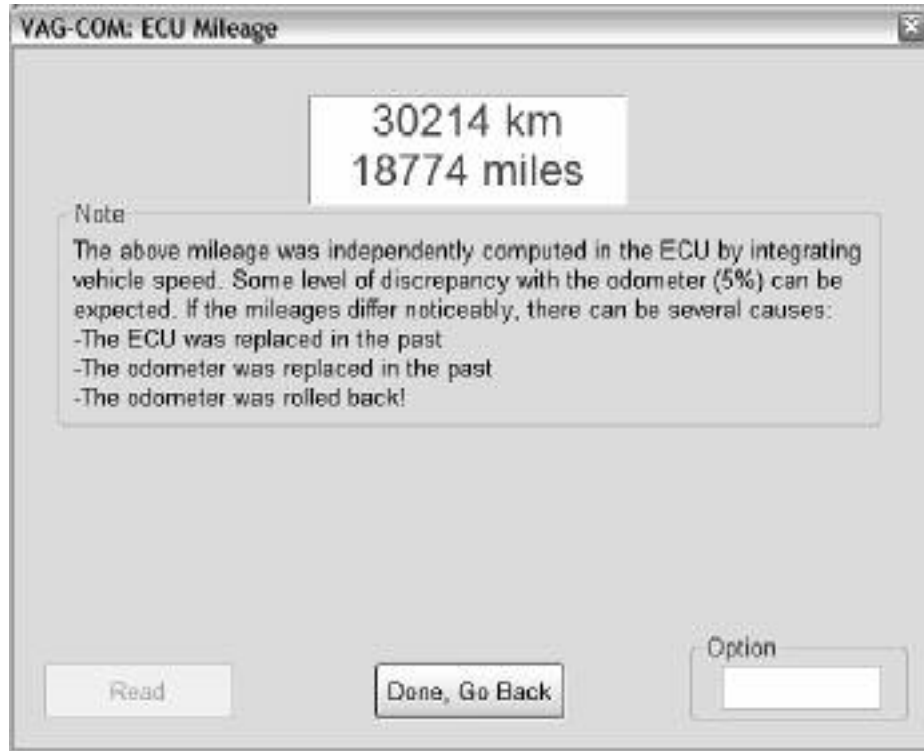
[Controller Channels Map]

Rapidly scans through all 255 possible Measuring Block groups or Adaptation Channels on any ECU and writes a "map" file. Output is your choice of .CSV or .PLB ("Prototype Label, Blocks"). Useful for creating new label files or taking a "snapshot" of all available data from an ECU.



Applications cont.

[EDC-15 Mileage] On some (but by no means all) TDI ECUs, VAG-COM can show an independent "odometer" reading stored in the ECU. This can be useful as a means of cross-checking the mileage on a used car at time of purchase, particularly in Europe where odometer fraud is rampant. We plan to extend this functionality to as many ECUs as practical in the future.



Use **[Done, Go Back]** to return to the Main screen.

VAG-COM - Options



On this screen you can set a number of Options and must be used the first time you run VAG-COM on a PC.

Select COM Port

Set the COM Port to the port number (or USB if applicable) where you have connected the Interface.

You can then click **[Test]** to see if VAG-COM can find the Interface. See the Getting Started section in this manual for more information.



The **[LED's]** button causes the LED on the Interface to blink and may be useful for testing a port's outputs for troubleshooting certain connection issues.

Options Screen cont.

User Interface

- **256 Color Mode for old PC's** This display mode changes the background color from blue to white, and looks better on some older monitors. The change will take effect after you close and restart VAG-COM.
- **Left Margin Printing** This is the number of spaces that printed pages are shifted to the right.
- **Window Size** This function allows you to change the apparent size of the VAG-COM window on your screen. Adjust this in small increments since it is possible to make VAG-COM so large that it is much bigger than your screen! To see the resizing take effect, click Save, then close VAG-COM. When you restart VAG-COM, the new window size should be shown.

Protocol Options

- **Start Baud** is the first baud rate that VAG-COM will try when connecting to a controller. The current default value is 0. This means VAG-COM will determine the correct start baud on its own. With our current Interfaces, this field is unavailable.
- **KW2 Delay** has to do with the amount of time used during the initialization of a session between the PC and the car. The current default value is 30. Do not change this value from the default unless you are having difficulties communicating with a particular controller. Contact us for advice if you are.
- **TST Addr.** has to do with the packet addresses used by KWP-2000. The current default value is -1. Do not change this value from the default unless you are having difficulties communicating with a particular controller. Contact us for advice if you are.
- **Debug Level** controls how much debugging information VAG-COM records. A zero in this field (the default) means NO debug output will be generated whatsoever. This should decrease VAG-COM's susceptibility to interference by things like virus scanners (except when logging data). There should be no reason to set Debug to anything other than zero unless you are instructed to do so by Ross-Tech.
- **Blk Int** affects the protocol timing. The current default value is 55. To get the highest sample rate possible in the Measuring Blocks screen, set this to 25. Note, however, that this may cause unreliable communications with some controllers.
- **Char Int** also affects the protocol timing. The current default value is 1. To get the highest sample rate possible in the Measuring Blocks screen, set this to 0. Note, however, that this may cause unreliable communications with some controllers.
- **KP2 Time** only applies to controllers using the KWP-2000 protocol. The current default value is 25. Decreasing it increases the sample rate in Measuring Blocks on control modules that use the KWP-2000 protocols. The default value should be safe for all applications, but if it's not, you can always increase it (to a maximum of 99).

Options Screen cont.

Protocol Options cont.

- **CAN Timeout** defines how much longer than normal VAG-Com is going to wait for the module to respond to a given message. Do not change this value from the default value of zero unless you are having difficulties communicating with a particular controller. Contact us for advice if you are.

Init Parameters

- **Bypass OBD-II Fastinit** should only be checked if you are experiencing difficulty connecting to a vehicle using generic OBD-II.
- **Force K on Engine** is used on controllers that use the CAN-Bus for diagnostics. This feature can be useful since the K-line often delivers faster sample rates while datalogging than does the CAN-Bus on modules that support both. Since some modules talk only via CAN, this box is unchecked by default.
- **Bypass CAN Init** should only be checked if you do not want VAG-COM to try connecting to vehicles using the CAN-Bus.
- **Force Dumb Mode** is used to prevent VAG-COM from automatically determining the baud rate for connections..

Reduce CPU Usage checkboxes will greatly increase responsiveness of other apps running at the same time as VAG-COM. The disadvantage is somewhat reduced sample rate.

- **KWP-1281:** The default value is unchecked. This reduces CPU usage when connected to controllers using KWP-1281. Using this feature *may* make the session with some control modules unreliable.
- **KWP-2000:** The default value is unchecked. This reduces CPU usage when connected to controllers using KWP-2000

[Restore Defaults] will reset all Protocol Options (except WorkShop Code and VZ/Importer number) to their "as-delivered" settings.

Workshop Identification

- **Shop Name** is displayed on reports, such as the Fault Code Report.
- The WorkShop **Code** (known as the WSC) is found on the Admin screen of a dealer's VAS-5051, as well as on the dealer's stamp. The default value is 00000. For example, using the stamp below, the dealer's number is 401/742. To derive the WorkShop Code, drop the first digit and use the remaining digits in order.



So, Evergreen Terrace Volkswagen has a WSC of 01742. This only applies to US VW dealers. Canadian dealerships use a 4-digit number on their stamp. To find the WSC, place a 9 before their number.

Options Screen cont.

Note: If you are an individual user or independent mechanic, just leave the WorkShop Code set to "00000". This allows VAG-COM to operate in "stealth" mode, keeping whatever WSC that was already in the controller. If you are using VAG-COM at a Dealership, enter your Dealer's Workshop Code. The Work Shop Code is not easily changed once set on this screen. Contact us for advice if you need to do so.

- The **VZ/Importer** number is essentially a "region code" extension to the Work Shop Code (should be 444 for US, 999 for Canada). The default value is 000.

Note: If you are an individual user or independent mechanic, just leave the VZ/Importer number set to "000". This allows VAG-COM to operate in "stealth" mode, keeping the Importer number that was already in the controller. If you are using VAG-COM at a Dealership, enter your Dealer's VZ/Importer number. The VZ/Importer number is not easily changed once set on this screen. Contact us for advice if you need to do so.

- The **Equipment Number** field is used most often when coding new control modules. Some control modules will refuse being recoded if they're not given an equipment number (sometimes they require a non-zero WSC and Importer number too). In those cases, any numbers should work. The default value is 00000.

[Save] causes the current options to be stored. You need to Save the first time you use VAG-COM on a PC.

[Apply] lets you use and test the options without storing them.

[Cancel] takes you back to the Main Screen without any effect.

VAG-COM - About Screen



License Info

- The **Serial Number** will initially be “Please test on car before registering” until you have connected to a car and checked fault codes in a controller. After you have done this, you will have a Serial Number composed of letters and numbers.
- **License Status** should always be Fully Registered / Activated, since all of our current Interfaces have activation built-in.

On this screen, you will also find a Copyright Notice and Contact Information. The Web and E-Mail "links" open up your browser or mail program, respectively and can be used if your PC is connected to the Internet.

To return to the Main Screen, click **[Go Back]**.

Appendix A: VAG-COM Problems & Issues

Possible Issues, all versions:

- We have some reports indicating that VAG-COM does not get along with the Zone Alarm firewall application. If you are using Zone Alarm, turn it off while using VAG-COM.
- SP1 (Service Pack 1) for Windows 2000 adversely affects VAG-COM's ability to do real-time and makes communications with some controllers unreliable. If using Windows 2000 with Service Pak 1, you should apply Service Pak 2 or Service Pak 3.

1997 VW Passat B5 Central Convenience System

These controllers seem to have a bug that causes them to drop the communications session when VAG-COM requests the door-slave controller "Extra" info. A work-around is available in Version 0.70e which simply does not request any "Extra" info. If you have a 1997 B5 Passat (non-US models only), use 0.70e on the Central Convenience system. 1998 and newer Passats do not have this problem.

1990-1993 VW Cabrio/Cabriolet Airbags

These controllers do not communicate with VAG-COM. In fact, they do not communicate with Volkswagen's VAG-1552 scan tool either, unless the 1552 has an old, outdated program card installed.

Audi Concert and Symphony Radios

These are made by Matsushita. The **Concerts** have blatant bugs in the diagnostic protocols. We've added one work-around to the low level protocol drivers that works in some, but not all Concerts, and it is not 100% reliable in any case.

Some Concerts occasionally get "stuck" in an undesirable mode after attempting communications. If your Concert gets "stuck", the way to reset it is to remove all power from the radio for at least 10-15 seconds. This can be done by any of these methods:

- Removing the radio from the car.
- Disconnecting the car's battery
- Pulling the fuse for the radio.

Note: Some radios will require you to enter the "security code" using the radio's front panel after loosing power. See the your owner's manual for the radio for instructions.

It appears that there is something not quite up to snuff in the **Symphony's** ability to drive the K-line. We've had some reports that they work better with non-optically isolated interfaces, and they may work better with the engine running (which means there is a higher voltage on the VBatt lines in the car).

Appendix A: Problems/Issues cont.

1994-1997 Audi C4 (A6/S6) Instrument Clusters

These have a high bit-error rate. We suspect they use a software-UART and "stretch" bits sometimes. The error-detection/correction logic built into VAG-COM's low-level protocol drivers as of version 0.70 seems to take care of this in a majority of cases, but we still had few reports of customers not being able to communicate with these clusters. In version 0.75 or newer, please ensure that **Char Int** on the Options Screen is set to approximately 3 (which is the default). On some PC's, it may be necessary to adjust this value to something other than 3. On very fast PC's try a higher value than 3. On very slow PC's, try a value lower than 3.

We have received reports from users who cleaned the terminals on the wiring connections at the back of their instrument cluster with electronics cleaner. This appeared to fix the problem with communicating with these clusters.

1996-1997 Audi A6 2.8L 12V V6 Engine

There is a bug in the Hitachi ECU that does not allow reliable monitoring or logging of multiple measuring groups. For these vehicles, we recommend only viewing or logging one group at a time.

2003+ 01J (CVT) Transmissions

These have rather unusual timing requirements. When used with a HEX Interface, increase **Char Int** on the Options Screen to approximately 4 or 5.

2004+ Bluetooth / Phone prep modules, part number 8P0-862-335

When used in the A4, A6 (C4/4B chassis only) and TT (8N chassis only) these modules may have problems communicating depending on the firmware version in the module. We are looking at various work-arounds. Always try the latest version (Beta or Release). These modules work fine when installed in cars where they communicate via CAN (8P chassis A3, etc).

Appendix B: VAG-COM Frequently Asked Questions FAQ

1.1 Will VAG-COM work with my car?

VAG-COM will work with most Volkswagen and Audi models sold **World-Wide** 1994 through 2007. It will work with some cars all the way back to model year 1990. It will also work with most late-model SEAT, and Skoda models sold in markets other than North America. If your VW or Audi has a 16-pin "OBD-II style" Data Link Connector, VAG-COM will definitely work. If your car has the old "2x2" Data Link Connection, check if there is a wire going to each pin. If there are four wires, VAG-COM should work. If there are only three, it won't.



Please see these Application Charts at:

www.Ross-Tech.com/vag-com/cars/applications/ where you can select your model and see which modules can communicate with VAG-COM. Also see the Issues page for a few things that may not work as expected. If in doubt, e-mail us.

1.2 Will VAG-COM work even if my car is "chipped"?

Yes. If it doesn't work in a "chipped" car, the chip-vendor did something seriously wrong! Chips from reputable vendors are fully VAG-1551 (and VAG-COM) compliant.

1.3 What functions are included in the current release?

VAG-COM is a software program that turns your PC into sophisticated VW/Audi diagnostic tool, which performs the functions of a factory VAG-1551 or VAG-1552 scan tool. Please see the Function Chart in Appendix E for the current feature set.

1.4 What are the computer requirements?

A computer running Microsoft Windows. A Laptop or "Tablet" computer is best, but a desktop PC can also be used. See also Question 1.7.

With a Serial interface: We recommend at least a 100 MHz Pentium (or AMD equivalent) with 16MB of RAM and Windows 95 or newer. Windows 95, 98, ME, NT4, 2000, and XP are all fine.

With a USB interface: We recommend at least a 500 MHz Pentium-3 (or AMD equivalent) with 64MB of RAM and Windows 98 or newer. USB interface work best with Windows XP on a 1 GHz or faster PC. USB interfaces will not work at all with Windows 95 or NT4.

VAG-COM may work on some lesser PC's, but anything less than the above recommendations are "unsupported" meaning if it doesn't work, please don't ask us for help.

Available disk-space should be a non-issue; VAG-COM requires less than 10 MB.

Screen resolution can be as low as 640x480.

If you are using a power supply for a laptop, it should be one specifically designed for that purpose, NOT a "universal" adapter.

Systems running Windows in a virtualized environment (for example Virtual PC on a Mac) are not supported. See also Question 1.8.

1.5 Should I get a Serial or a USB interface?

This depends primarily on the PC you're planning to use:

Appendix B: VAG-COM FAQ cont.

1.5 Should I get a Serial or a USB interface? con't.

If your PC has a Serial port, we recommend a Serial interface because they offer the most precise protocol timing possible and do not require any drivers to be installed. A Serial port looks like this:



Observe the port we surrounded with the **GREEN** oval. Notice the 9 male pins? That's a Serial port. Observe the port circled and crossed in **RED**. Notice the 15 female pins? That is a Monitor port and will **not** work!

If your PC does not have a serial port, then you should get a USB interface. USB interfaces have only one advantage over Serial interfaces: They work on PCs that don't have Serial ports. A USB interface is not faster. However, it is becoming increasingly difficult to find new laptops which still have serial ports, so if your PC has both Serial and USB ports, has at least a 1GHz CPU and is running Windows XP,

USB<->Serial converters are often unable to handle the baud rate and timing requirements that are demanded by many control modules using the VAG protocol. We have had very poor results with most available USB<->RS-232 converters, therefore **USB<->Serial converters are "Not Supported."** Please do not ask us for technical assistance if you are using one of these converters.

If you want to use one of our Serial interfaces on a PC that doesn't have a serial port, we recommend you buy a Quatech SSP-100 PCMCIA-Card. We don't sell them, but we've had excellent results with them. We've got installation and configuration notes here.



<http://www.ross-tech.com/vag-com/quatech/index.html>

1.6 What if the PC I wish to use with VAG-COM doesn't have Internet access?

To update VAG-COM, you'll need to download and install the latest version from our website. Because our updates are provided to you via our download page, rather than on floppy disks or CD's, you will need a way to transfer the Self-Installing EXE file to the PC that you will be using with VAG-COM. The file fits easily on a portable USB memory device and can also be burned onto a CD-R or CD-RW. Make sure that you do not run the EXE file until you have copied it onto the PC where you would like VAG-COM to be installed. You do not need to be connected to the Internet while using VAG-COM.

1.7 Can I use VAG-COM on a desk-top computer?

Yes, use the Serial (DB9M to DB9F) extension cord included with your kit to extend up to 25 ft. You can extend an additional 25 ft. by purchasing a second Serial Extension Cable. USB versions can be extended using the 16-ft active USB extension in the kit.

1.8 Will there be a Mac or Linux version?

There will be no "native" Mac or Linux versions. The time and effort required to "port" VAG-COM to these platforms would never be worthwhile. One person has gotten VAG-COM running under Linux using WINE and another person has managed to get VAG-COM working on a MAC with Virtual PC. Results on IBM/Motorola Power-PC based Macs using Virtual PC vary. Some people have gotten it to work, but sample rates tend to be poor and the sessions tend to drop frequently. This is likely inherent in the overhead and latency inherent in the virtualized environment. Some people have not gotten it to work at all.

Reports from several people indicate VAG-COM works perfectly on the latest Intel-based Macs when these run Windows XP natively using Boot Camp

Appendix B: VAG-COM FAQ cont.

1.9 Will there be a Windows-CE/PocketPC/WindowsMobile or Palm-OS version?

Possibly at some point in the future, but we don't have a timetable yet. We conducted a poll of current and potential VAG-COM users about where we should concentrate development efforts. The results:

75 % Improving and adding features to the Windows version

11 % Porting VAG-COM to Windows CE / PocketPC

9 % Porting VAG-COM to Palm

3 % Porting VAG-COM to LINUX

2 % Porting VAG-COM to Macintosh

Some of our customers use VAG-COM on a tablet PC such as a Fujitsu Stylistic or on an ultra-portable PC such as a Toshiba Libretto. These can be purchased inexpensively on auction sites. These REAL PC's work wonderfully and have very small form factors (the Libretto is about the size of a VHS video cassette).

1.10 What's the difference between VAG-COM and an OBD-II Scan-Tool?

OBD-II is a government mandated diagnostic protocol that is primarily aimed at diagnosing emissions-related problems. An OBD-II scan tool will work in many different brands of cars. VAG-COM uses VW's proprietary diagnostic protocol and will only work in VW/Audi vehicles. Although you can use an OBD-II Scan Tool in an OBD-II compliant (1996 or newer) VW or Audi, an OBD-II Scan Tool can only talk to the engine, not the numerous other "intelligent" systems in the car. Want to reprogram your central locks or your Radio? Diagnose a problem with your ABS, Airbags, or Automatic Transmission? Re-align your Immobilizer after swapping ECU's? Reset your Service Reminder Indicators? Communicate with a pre-1996 model (not OBD-II compliant) car? An OBD-II Scan-Tool can't do any of these things. Our latest version of VAG-COM adds Generic OBD-II functionality, see the Generic OBD-II section in this manual for more information.

1.11 Can I use VAG-COM to roll back my electronic odometer?

A: No. A brand new instrument cluster (with less than 100 km on it) can be rolled forward, one time only. Of course, this assumes that the instrument cluster is "diagnostics capable". Not all instrument clusters with electronic odometers are.

1.12 Can I use VAG-COM to "Flash" the chip in my ECU?

No, we have investigated flashing, but found that there are several different methods of encryption for various VW/Audi vehicles, as well as delicate licensing issues to overcome. Therefore, we do not intend to pursue flashing any further at this time. You cannot alter boost, timing, fueling, rev limiter, or speed limiter with VAG-COM. You should contact a chiptuner if you wish to have those parameters altered.

1.13 Is there anything else I need to make full use of VAG-COM?

Yes. A good **Factory Repair Manual** containing the VAG Scan-Tool procedures for your car. VAG-COM is a tool, not an on-line service manual. We could not possibly document everything you can do with it in every year and model of VW/Audi that VAG-COM can be used with. The most cost-effective manuals with good Scan-Tool procedures for US/Canadian vehicles are the CD-ROMs from Robert Bentley Publishers. We offer these at a discount to registered VAG-COM users. Beware, however, that many of the paper "Service Manuals" published by Bentley do not contain Scan-Tool Procedures. If a paper Bentley manual is called a "Service Manual" it usually does not have scan-tool procedures. If it is called "Official Factory Repair Manual", it does. An additional source of manuals that contain Scan-Tool procedures is Dyment Distribution Services (1-800-544-8021).



Since the above Bentley Factory information only applies to US/Canadian vehicles, if your car is European-spec or from the rest of the World, they may be of little use to you. For Rest-of-World VW, Audi, and SEAT manuals, check erwin-portal.com
For Rest-of-World Skoda manuals, check skoda-haendlershop.de (German-only)

Appendix B: VAG-COM FAQ cont.

2.1 How do I Register/Activate my software?

All of our Current Interfaces have Activation built-in, so VAG-COM should always be Fully Activated once it has been tested on a car.

2.2 What's the difference between the Shareware version and the fully registered version?

When you first download a new version of VAG-COM from our website. it operates in a limited Shareware mode until you plug in the HEX Interface and test it on a car.

2.3 Is Product Support included in the price?


A: Absolutely. If you have a question or problem, please post it to the VAG-COM mailing list, mail it to us directly, or give us a call. However, please understand that we don't know everything about every VW/Audi ever made.

2.4 Why can't I get VAG-COM to communicate at all?

Check the following:

- Is the adapter plugged into the car? A Serial Interface that is not plugged into the car will always be "Not Found". It gets power from the car!
- Is the car's ignition switch in the ON position?
- Is it plugged into the correct serial port? Some PC's have the ports mis-labeled.
- Are the serial ports on your PC properly configured?

2.4 Why can't I get VAG-COM to communicate at all? Cont.

- Disable Palm HotSync or Microsoft ActiveSync software!
- If you have a 1997 or newer car with an aftermarket radio, read this page:
 <http://www.ross-tech.com/vag-com/aftermarket-radio.html>
- Check our Issues page for any special configuration settings that may be necessary for your vehicle
- If you are using a power supply for a laptop, it should be one specifically designed for that purpose, NOT a "universal" adapter.

Note: If you test the COM port, but an hourglass appears, you may have an IRQ conflict. This may not show up in Device Manager as a conflict. But, try this:

- Start>Run>MSINFO32.EXE to bring up the System Information utility.
- Go to Hardware Resources>IRQs This should show a list of all devices by their IRQ, so you can see if there are any repeated or shared IRQs.

If all else fails, feel free to call or email us, making sure to provide the **brand and model of vehicle, brand and model of PC, and version of VAG-COM.**

2.5 VAG-COM communicates, but it's "flaky".

The diagnostic protocols require a degree of real-time response from the diagnostic tool. Certain other programs and services can prevent VAG-COM from responding in the timely fashion that the protocols require. Some control modules are fussier about this than others.

Appendix B: VAG-COM FAQ cont.

2.5 VAG-COM communicates, but it's "flaky". con't.

Fixes:

Make sure you are using the latest version of VAG-COM. If you have any other programs running, close them. If you have any of the following active on your computer, turn them off:

- Virus Scanners
- Task Scheduler
- Microsoft Active-Synch
- Fast-Find
- Some Novell Netware network drivers
- Canon "Multipass" multi-function printer/scanner software
- Power Management -- some laptops are notoriously difficult, try running the laptop on AC power!

Other Tips:

- Go through all the stuff in your System Tray:



Right-Click on each little icon. If there's a "Disable" or "Exit" option, do it!

- Windows 2000 with SP1: Install IE 5.5 or SP2.
- Windows 95/98/Me: Pull up a task list by pressing CTRL-ALT-DEL. Kill everything except Explorer and Systray.
- Most versions of Windows: Start -> Run -> MSCONFIG. Take a look at what other non-essential stuff Windows is loading and disable it.
- STOP or remove PCMCIA Cards, especially anything made by Xircom. Some IBM brand cards are also problematic.
- Try turning Off your COM Port's FIFO buffers. Open the properties sheet for the COM Port in Device Manager. Select the Port Settings tab. Click the Advanced button. Uncheck the "use FIFO buffer" checkbox.
- Some Windows installations, especially ones that have had numerous program installed and uninstalled over the years may be hopeless. Try installing a clean copy of Windows in a different folder than the original.
- If you have an older, slower PC running Windows XP, try setting the Display Properties>Appearance to Windows Classic Style instead of Windows XP Style.
- If you are using a USB Interface, go to Device Manager, USB Root Hub, Properties, Power Management, and uncheck "Allow Windows to turn off this device to save power"
- If your PC has multiple Serial or USB ports, try using a different port.

If all else fails, feel free to call or email us, making sure to provide the **brand and model of vehicle, brand and model of PC, and version of VAG-COM.**

2.6 Why does my dash BEEP when I access my ABS controller?

In many of the newer models, there will be a series of BEEPs from the dash when you access the ABS controller (and the ABS light will be ON while you are talking to it). This is perfectly normal and is done to notify the driver that the ABS is non-functional while in diagnostic mode.

Appendix B: VAG-COM FAQ cont.

2.7 Are there any Fault-Codes that can and should be ignored?

Yes. Most 1995 and earlier Bosch ECU's will show you a DTC 00513 - Engine Speed Sensor (G28) if you scan them when the engine is not running. This fault code goes away by itself once you start the engine. If this sensor were truly defective, the engine would not run at all! Please ignore this code. In addition, many Automatic Transmission Control Modules will show a DTC 00526 or 17087 that indicates a faulty brake light switch. This can also be ignored and will not appear if you press the brakes once before checking for Fault Codes.

2.8 Are there any known Bugs / Problems / Issues?

Please check the Issues Page in Appendix A and the Revision History Page online:



<http://www.ross-tech.com/vag-com/revisions.html>

2.9 What's the Work Shop Code?

Every VW/Audi dealer in the world is assigned a unique Work Shop Code. A brand-new factory VAG-1551/1552 or VAS-5051/5052 scan tool will not function until a WSC is entered, and once it has been entered, it cannot be changed. Whenever a Control Module is Re-Coded, or certain Adaptations are performed, the scan tool sends its WSC to the control module and the control module records it for posterity. Thus, if a scan-tool is used to do something like disable certain airbags, in principle it should be possible to tell who (which dealer) did that. Like the factory scan-tools, VAG-COM will accept a WSC once on the Options Screen. If you enter a WSC there, it will be sent to the control modules exactly like it's supposed to be. If you leave the WSC on the Options Screen at its default of 00000, VAG-COM will operate in "stealth mode". Instead of sending a fixed WSC, it will put back whatever was already in the control module, with one exception: If it finds the "telltale" WSC (30011) that VWTool/VDS-PRO likes to leave behind, VAG-COM will replace it with something more innocuous.

2.10 What's with the DEBUG files?

VAG-COM uses these to record a lot of the data being exchanged between the car and your PC. Having these can be very useful if there is some sort of unexpected problem communicating with a controller in your car. By default, the Debug Level is set to 0. If you're having a problem, we may ask you to set the Debug level to something other than zero, and to send us a specific Debug file. The best way to send Debug files is to ZIP them first. Contact Ross-Tech if you need assistance doing this.

3.1 Do I need an Interface Adapter?

Yes. The ISO-9141 port in your car is not directly compatible with any standard PC port. The ISO-9141 port in your car is somewhat RS-232 like, but you can't just wire up a cable -- you must put electronics in between to allow a PC to communicate with the car.

3.2 Can I use an Interface adapter that came with another software package?

No, the current version of VAG-COM (versions 500.x and newer) are not compatible with 3rd party interfaces at all, even in shareware mode. To use the latest version of VAG-COM, you need to use a modern genuine Ross-Tech Interface purchased directly from Ross-Tech or from one of our distributors.

3.3 Can I buy an Interface adapter somewhere else?

No, the current version of VAG-COM (versions 500.x and newer) are not compatible with 3rd party interfaces at all, even in shareware mode. To use the latest version of VAG-COM, you need to use a modern genuine Ross-Tech Interface purchased directly from Ross-Tech or from one of our distributors.

Appendix B: VAG-COM FAQ cont.

3.4 Can I build my own Interface Adapter?

No, the current version of VAG-COM (versions 500.x and newer) are not compatible with 3rd party interfaces at all, even in shareware mode. To use the latest version of VAG-COM, you need to use a modern genuine Ross-Tech Interface purchased directly from Ross-Tech or from one of our distributors.

3.5 Why does VAG-COM require Activation?

All of our Current Interfaces have Activation built-in so users never have to worry about Activation, De-Activation, etc. However, VAG-COM versions prior to 5xx.x will also run through "dumb" interfaces, which are not particularly difficult to make and we would like to get paid for our work! The reality is that there are many people in this world that just won't pay for software unless they have to. We've invested a large amount of time and expense into reverse-engineering the VAG protocols and we're trying to make a living with this product. Further more, we're trying to sell it at a price that makes it affordable to everyone. The activation scheme is intended to ensure that we get paid by every user, not to make life difficult for registered customers.

3.6 What if I need to run VAG-COM on more than one PC?

All of our current Interfaces have Activation built-in, so you can download and install VAG-COM onto as many PC's as you'd like, so VAG-COM is fully Registered and Activated once you test it on a car.

3.7 How do I permanently move VAG-COM from one PC to another?

All of our current Interfaces have Activation built-in, so you can download and install VAG-COM onto as many PC's as you'd like, so VAG-COM is fully Registered and Activated once you test it on a car. If you need to run VAG-COM on a PC that does not have Internet access, simply download the installation program from our website and save it onto a CD or USB drive.

3.8 What's the De-Activate button for? Why would I want to do that?

All of our Current Interfaces have Activation built-in, so there is neither a need nor a choice to De-Activate.

3.9 Why has VAG-COM become De-Activated on its own?

All of our Current Interfaces have Activation built-in, so VAG-COM should always be Fully Activated once it has been tested on a car. If you have a Current Interface and VAG-COM has become De-Activated, please contact us

3.10 Can I sell my VAG-COM System to someone else?

You can sell the hardware, but the software license and support are not transferable. All of our Current Interfaces act as "dongles" for VAG-COM, so the software should be fully functional on any PC that meets our requirements. However, we only provide support to the original purchaser. If you purchase a second-hand "dongle" Interface and want to be a "registered user" and get technical support, you'll still need to pay \$99 to register.

Appendix B: VAG-COM FAQ cont.

4.1 Why and How should I test VAG-COM prior to Activating it?

All of our Current Interfaces that have built-in Activation, are fully Registered and Activated once you test them on a car. With these Interfaces, the license is built in, you do not have to Activate VAG-COM, but obviously you'll want to test VAG-COM when you get it to make sure everything works properly. First, Download and install VAG-COM on your PC. Find your vehicle on the Applications Page to see which control modules are in your car. Connect your Interface to your car's Diagnostic Port and to your PC. Turn the ignition ON (turn the key so the Instrument Cluster lights up, but do not start the car -OR- start the car). Go into the Options screen, select the correct port, and click the TEST button. Ensure that VAG-COM finds your interface, you should see a message that says Interface Found. Now click SAVE. Select one of your car's Control Modules (note: your car will not have all the Control Modules listed in VAG-COM, only the ones on your Applications Page). After VAG-COM has Connected, check Fault Codes. Repeat the process for each of your car's Control Modules. If you encounter problems, please try the FAQ Suggestions first. If you still have problems, feel free to Contact Us with full details about your PC and vehicle, preferably while you are in front of both.

4.2 Can I use VAG-COM while I am driving?

We strongly recommend against reading data while driving -- that would be an accident waiting to happen. Almost everything that changes while you drive can be LOGGED to a .CSV file, which you can analyze to your heart's content using VAG-Scope or Excel (or a number of other programs) preferably while the vehicle is not in motion...:-) If you find it necessary to read data while the vehicle is in motion, we strongly urge you to use a second person -- one to drive, one to look at the PC. This second person should sit in the back seat, because a laptop used in the front passenger's seat becomes potentially lethal if an airbag drives it back into the passenger's head or torso in case of an accident.

4.3 What is "The Aftermarket Radio Problem"?

If you are working on a 1997 or newer car with an aftermarket radio read this page:



<http://www.ross-tech.com/vag-com/aftermarket-radio.html>

4.4 How do I upgrade my existing VAG-COM software to the newest version?

You should be able to simply Download and install the latest release of VAG-COM in your PC. All of our Current Interfaces have built-in Activation, so the new version should be fully Registered and Activated once you test on a car. If you'd like to be notified when a new version of VAG-COM becomes available, you should sign up for our Announcements List. If you purchase a genuine Ross-Tech Interface directly from us, or from one of our Distributors, you are entitled to free software updates for at least one year from date of purchase.

4.5 What is the purpose of the "OBD-II" button? Why would I want to press it?

See the Generic OBD2 section of this manual for more information on how to use VAG-COM on ISO-9141 compliant OBD2 vehicles. This function nothing to do with the VAG protocol that VW uses, and the results of this test have nothing to do with VAG-COM working with any VW/Audi/SEAT/Skoda vehicle. No VW or Audi products prior to model year 1996 are OBD-II compliant! Please note that most vehicles sold outside of the US are NOT OBD-II compatible, and even some US-market TDI's are not OBD-II compatible.

4.6 How do I print screens or data in VAG-COM?

You can print reports from VAG-COM's Fault Code, Auto-Scan, Control Module Finder, and Gateway Installation screens. You can save data to a Log file and print using a spreadsheet program. To print screens, we highly recommend the HardCopy (freeware) program.

Appendix B: VAG-COM FAQ cont.

4.7 What are Label Files?

In Measuring Blocks, Basic Settings, Adaptation, or Recode, VAG-COM tries to elaborate as much as possible what the data means. Unfortunately, the "Data Type" information coming from the Control Module is not that precise. For example: VAG-COM can tell that a particular field contains a Temperature, but the data from the Controller doesn't tell us whether this is the Coolant Temperature or the Intake Air Temperature.

To reduce the confusion, VAG-COM supports Label Files and which provide more information about the data being displayed in Measuring Blocks and can also provide additional information for the Coding function and Adaptation Channels. When a Label file for the Control Module you are looking at does not exist, VAG-COM will base the elaboration on an "educated guess" as to what a particular Data Type means.


For more information about Label Files, see this page:

 <http://www.ross-tech.com/vag-com/labels.html>

4.8 How can I speed up my sample rate in VAG-COM?

The sample rate at which you can view and log data is largely determined by each controller in the car. There are a few things you can do to speed up the rate for a given controller. First, logging one group at a time, rather than two or three, will help greatly. In order to get the highest sample rate possible go to the Options screen and set Blk Int to 25 and Char Int to 0. Note, however, that this may cause unreliable communications with some controllers. The KP2 Time parameter only applies to controllers using the KWP-2000 protocol. Decreasing it speeds up the sample rate in Measuring Blocks on control modules that use the KWP-2000 protocols. Try setting it to 0. If any of these adjustments cause unreliable communications, change them back closer to the defaults. If in doubt, use the Restore Defaults button! In Engine controllers using KWP-2000, there is a [Turbo] button in the latest version of VAG-COM. This can significantly speed up sampling, in some cases to over 30 samples per second. See the Measuring Blocks page for more information.

4.9 What kinds of cool stuff can I do with VAG-COM? See our Car Info & Procedures Page where you can look up Vehicle Specific Application Charts for your car to see which control modules exist and can communicate with VAG-COM. Additionally, there are some very useful links to pages about Key Matching, Immobilizers, as well as some excellent spreadsheets submitted by our customers.

 <http://www.ross-tech.com/vag-com/cars/index.html>

4.10 How do I set up my USB Interface?

To use one of our USB Interfaces, you'll need to download and install the latest version VAG-COM with USB Support. After you have installed VAG-COM, you will need to follow the instructions in the Getting Started section of this manual.

Appendix B: VAG-COM FAQ cont.

4.11 Does Ross-Tech make diagnostic software for other makes of cars?

Ross-Tech has plans to introduce a diagnostic package for BMW/MINI and we have put considerable effort into its development. However we've come to realize that before this product can meet the high standards that our customers have come to expect from VAG-COM, it will require considerably more time and resources than originally planned.

Therefore the BMW/Mini product release is not imminent. As this situation changes, we will update this FAQ entry with the relevant information and will post announcements on our News page.

We do not currently have plans to develop manufacturer-specific software for any other makes of cars, but of course, all plans are subject to change.

We do not know of any other makers of similar software for other makes of vehicles. Our latest Version of VAG-COM adds Generic OBD-II functionality, see the OBD-II Page for more info.

4.12 Can I use VAG-COM to retrieve my Radio Code to get it out of "SAFE" mode?

No, You'll need to get the radio code from your dealer (it should also be on a card that came with your car). Most likely, the dealer will need to physically remove the radio to read its chassis number, then the chassis number is input into a database at the dealership to retrieve the radio code. Neither VAG-COM nor the factory scan tools can retrieve the radio code for you.

4.13 Does VAG-COM work with cars that require direct CAN access for diagnostics?

Yes! We have integrated CAN compatibility into the latest version of VAG-COM, but since CAN uses different hardware, new interfaces are required. The HEX-COM+CAN and HEX-USB+CAN interfaces are fully compatible with the latest cars that require a direct CAN connection as well as being backwards-compatible with the older cars that use k-lines.

4.14 Can I use VAG-COM to make my windows roll up and down using my keyfob remote?

Many Audi vehicles can be recoded to allow this function, see this example. Unfortunately, most VW models do not have the same capability except the Mk5 Golf platform cars and the B6 Passat. In order to make your windows roll up and down using your remote in an older VW, you'll need to add extra hardware such as the Remote Window Controller from:

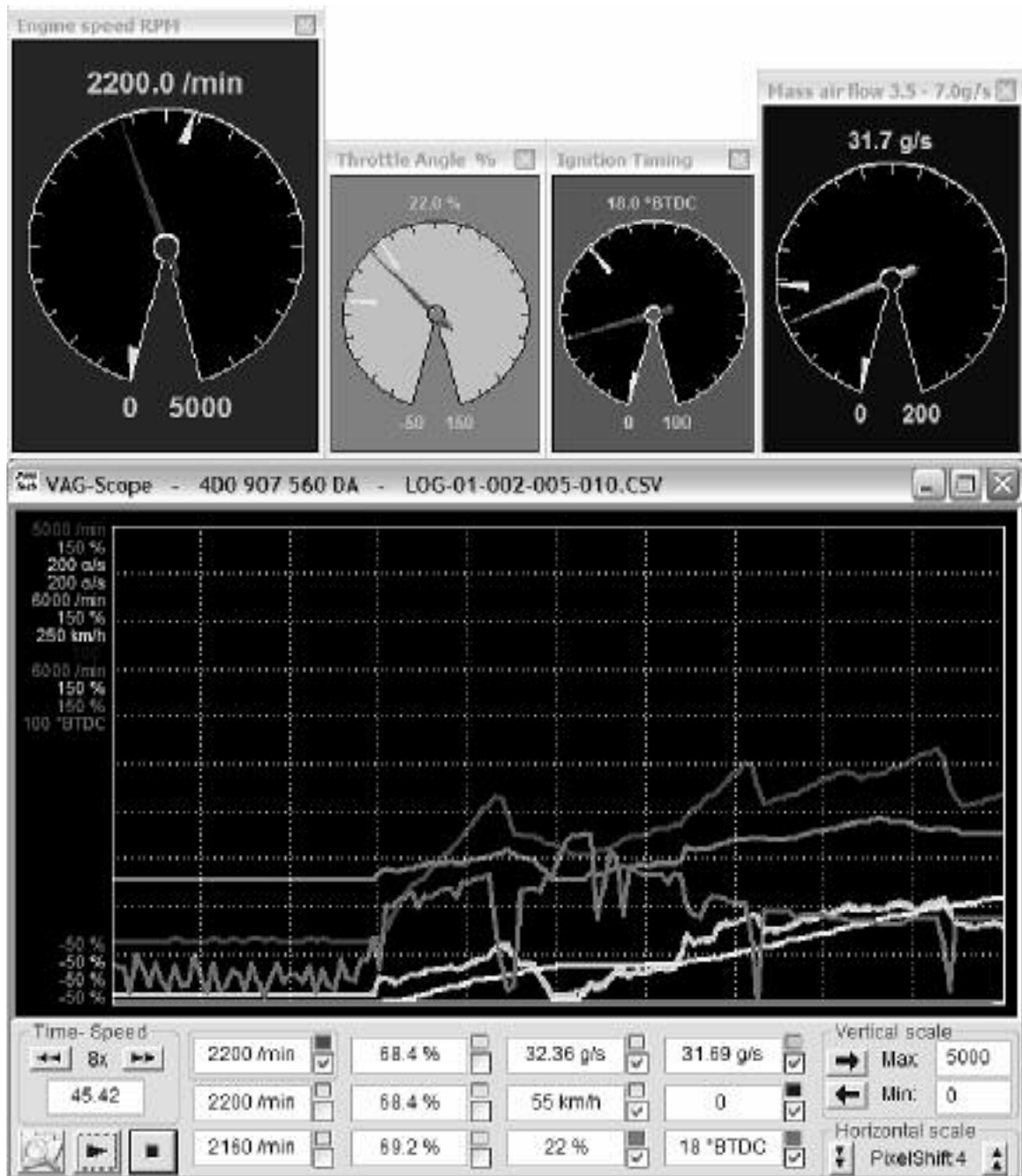


<http://www.alientech.net>

4.15 How do I obtain an SKC for Immobilizer and Key-Matching functions?

We do not know of any way to retrieve an SKC for VW/Audi/SEAT/Skoda vehicles other than getting it from an official dealership. Prior to 2002, some vehicles were delivered with a 4-digit SKC on a scratch-off panel on a plastic tag. Starting in 2002, dealerships implemented the WIN2 system to provide 7-digit SKC's to their technicians and customers. Recently, many dealerships have switched to the new GEKO system, whereby their factory scan tools dial up the factory while connected to a car. Under this system, the technician no longer sees the SKC at all. VAG-COM does not interact with the GEKO system.

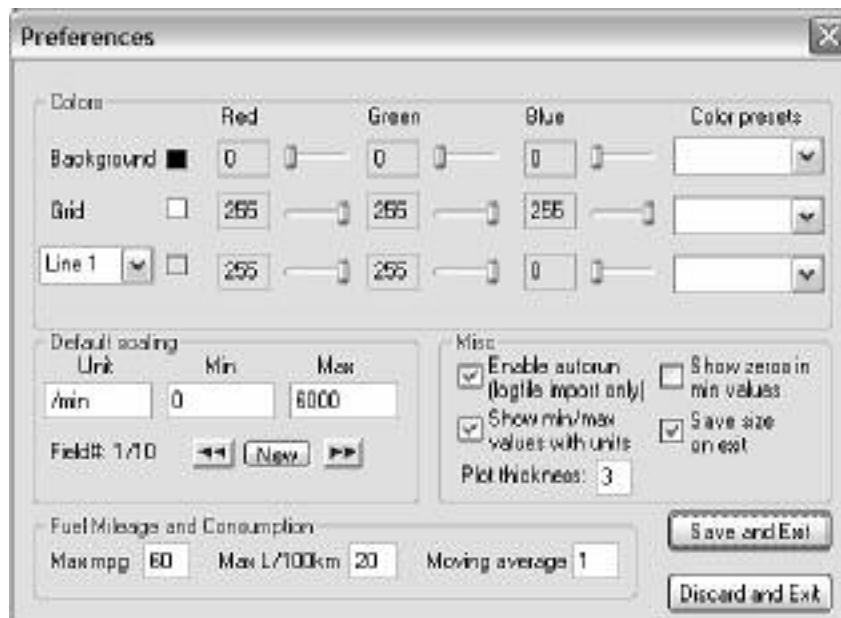
Appendix C: VAG-Scope Graphing "Plug-In" for VAG-COM



Appendix C: VAG-Scope cont.

Quick Instructions:

- You can use VAG-Scope in one of two ways: Allow VAG-COM to launch VAG-Scope by clicking the **[VAG-Scope]** button on the Measuring Blocks screen, or manually start VAG-Scope in stand-alone mode to play back VAG-COM Log Files. You cannot do both at the same time. If VAG-Scope is running in Stand-alone mode, VAG-COM will not start. If you manually start VAG-Scope while VAG-COM is running, it will probably complain.
- Use the checkboxes next to each display field to select which items are graphed.
- Click on a field to select it for vertical scaling. VagScope will remember all scaling values for a particular control module by part number.
- Click the Ross-Tech Icon for a menu item to access a Preferences Dialog:



Preferences:

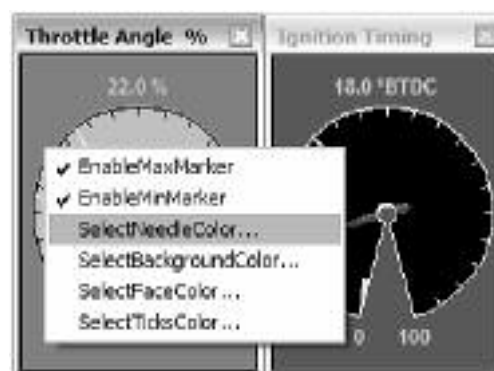
- Here you can set colors for the graph lines, the graph background and the grid.
- You can also set default scaling values (based on the units that VAG-COM sends)

NOTE:

VAG-Scope can be used to play back Log files produced by any version of VAG-COM. VAG-Scope included in the latest VAG-COM release on our Download page.



Right-click on the color box to open up a gauge for that value.



Appendix C: VAG-Scope cont.

VAG-Scope -- FAQ:

Q: What are those numbers on the left of the graph?

A: They are the scaling numbers. They define the min and max values that will be graphed in the window. For instance, a temperature could be graphed between -10 and 130°C.

Q: Great, but I don't like the current ones.

A: Don't worry, everything is fully customizable. You have two different ways of choosing your scaling factors:

- In the preferences screen, you can either modify the values for an existing units, or add a new unit with its values. Make sure the unit is spelled exactly (including the case) as it appears in the measuring blocks/graphing data.
- In the main screen, click on a field (or use the blue horizontal arrow) to display its scaling values. The field you're working on is surrounded by a frame. You can then change the min and max scaling factors for this particular field

Both settings are saved, so that next time you won't have to do it all over again!

Q: So what's the difference between these two different ways?

A: First, you need to understand how the values are stored/retrieved. When Vag-Scope graphs data from a controller it doesn't know, it applies the values in the preferences screen, for the units that are defined. If a unit is "unknown", the min will be 0 and the max will be 100.

Setting the values in the main screen allows you to override these defaults. For instance, let's say you set the rpm (/min) value in the preferences screen at 7000. This is fine for gasoline engines. But a friend visits you with his TDI. What you do is you set the /min fields in the main screen at 4500, to keep a good resolution in your graph.

At that point, as soon as you stop graphing, the values are stored in the "scaling" directory, in a file named by the controller part number. And next time you connect to the same controller, VAG-Scope will automatically remember your settings.


Q: What's the deal with the horizontal scaling?

A: This enables you to tell VAG-Scope the value of the horizontal shift (in pixels) each time a new sample is delivered by VAG-COM. This is customizable because of the range of sample rates you can experiment with VAG-COM: you can go from 30 samples per second on a '02 A4 3.0Q (engine, 1 measuring block at a time) to 0.4 on a Eurovan (transmission, 3 measuring blocks). The default is 3, but you may want to increase it if your sample rate is low. This way your graphs will be more readable.

This value is also saved automatically for each control module.

Q: Why do I have a big blank after I hit "pause" in live mode?

A: This is intentional. It shows the graph has been paused and avoids having a big discontinuity in the curves (for instance going from 800 to 7500 rpm in 0.2 second...).

The "pause" button () can be handy to make screenshots of a particular situation, like a boost spike for example.

Appendix C: VAG-Scope cont.

VAG-Scope – FAQ cont. :

Q: VAG-Scope says "unexpected end of values". What's wrong?

A: At this time, VAG-Scope does not support appended log files. More precisely, it will only read the first part of them. The solution is to give your files a more specific name than "LOG-001-003-xxx-xxx" :-)

Q: "This is not an original VAG-COM log file"

A: Guess what, you altered the file in some way. For instance, just reading and saving the file in excel adds comas to it, and this is what VAG-Scope relies on to parse the file.

Solution: make a copy of the file before you edit it with a program that modifies the comas.

Q: I'd like to write my own VAG-Scope. Is this possible?

A: Yes, that's one of the reasons why VAG-Scope is open source (the other being we don't want to be bothered by 10 different feature requests a day). VAG-Scope was written using MS Visual C++ 6 and you will find the source code on our website.



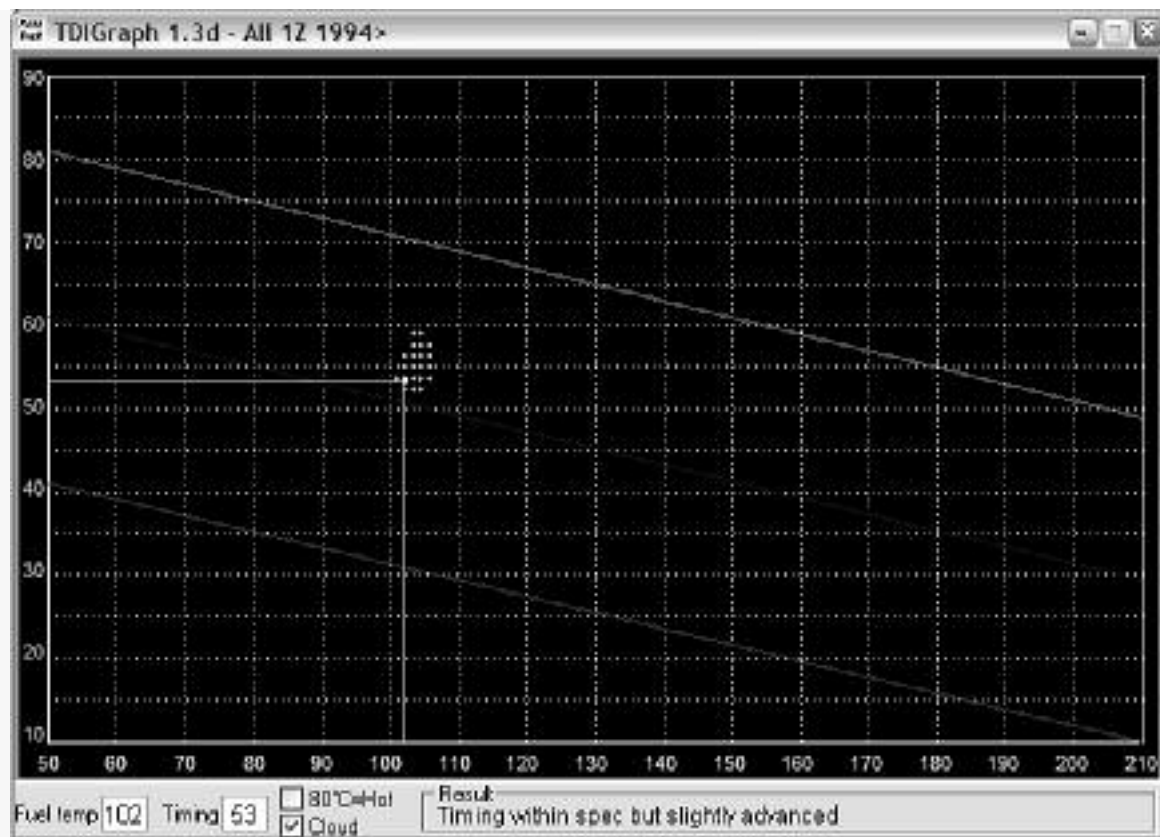
www.ross-tech.com/vag-scope/

Feel free to improve/write your own VAG-Scope and publish it. Obviously your file has to be called VagScope.exe so that VAG-COM can "spawn" it.

Q: But I can't program/all I know is VB!

A: Then stop complaining or learn! ;-)

Appendix D: TDI Timing Checker "Plug-In" for VAG-COM



This plug-in allows you to check the injection timing setting on a TDI engine. This needs to be done after you changed the timing belt and every once in a while to keep tabs on belt stretch and pump/pulley misalignment. The standard procedure for this is to have the engine idling at operating temperature (coolant temp >85°C), go to measuring block 000 for the engine, switch to basic settings and report fields #2 (injection timing) and #9 (fuel temperature) on a special graph.

This plug-in reports the timing on the graph in real-time, so you don't need to have your manual sitting on your lap at the same time. The application also gives you a comment in the "result" field, that will tell you if all the conditions are fulfilled to check the timing (some people don't realize you need to have the engine running, for instance...) and if your timing is within specs or not.

The history of the last 100 samples is displayed as a "cloud" of points. From the size and shape of this "cloud" you can see how much "jumping around" your engine is doing, and your average timing is probably right in the middle of the cloud.

Appendix D: TDI Timing Checker cont.

Step by step:

- Start your engine
- Start **VAG-COM**
- Press the **[Select]** button
- Press the **[01-Engine]** button
- Press the **[Measuring blocks-08]** button
- Go to group 000
- Press the **[Switch to basic settings]** button
- Now press the **[TDI Timing]** button.

Note:

The TDI Timing Checker works only as a “plug-in”. You must start it using the **[TDI Timing]** button in VAG-COM. Starting it any other way will result in error messages and it won't work.

Appendix E: VAG-COM Function Chart

Factory Diagnostic Tools: VAG-1551/1552 or VAS-5051/5052 Function Number / Name	VAG-COM Release 607
00 Auto-Scan	<u>Yes</u>
01 Control Unit Info	<u>Yes</u>
02 Read Fault Codes	<u>Yes</u>
03 Output Tests	<u>Yes</u>
Selective Output Tests (KWP-2000 only)	<u>Yes</u>
04 Basic Settings	<u>Yes</u>
05 Clear Fault Codes	<u>Yes</u>
06 Close Controller	<u>Yes</u>
07 Code Module	<u>Yes</u>
Code Slave Modules KWP-2000 only)	<u>Yes</u>
08 Measuring Blocks	<u>Yes</u>
09 Single Reading (KWP-1281 only)	<u>Yes</u>
10 Adaptation	<u>Yes</u>
11 Login called Coding II under KWP-2000)	<u>Yes</u>
15 View Readiness	<u>Yes</u>
16 Security Access (KWP-2000 only)	<u>Yes</u>
20 Supported Codes (KWP-2000 only)	<u>Yes</u>
33 Generic OBD-II	<u>Yes</u>
Freeze-Frame Data (KWP-2000 only)	<u>Yes</u>
Dual K-Line Support	<u>Yes</u>
7-Digit SKC/PINs (VAS only)	<u>Yes</u>
Code Database current through MY 2007 (VAS)	<u>Yes</u>
Diagnostics via direct CAN connection (VAS Only & KWP-2000 only)	<u>Yes</u>
Transport Mode (VAS Only & KWP-2000 only)	<u>Yes</u>
Advanced Measuring Blocks	<u>Yes</u> (Factory tools cannot do this!)
Data Logging	<u>Yes</u> (Factory tools cannot do this!)
High Speed Data Logging (KWP-2000 only)	<u>Yes</u> (Factory tools cannot do this!)
Real-Time Graphs	<u>Yes</u> (Factory tools cannot do this!)
Real-Time Gauges	<u>Yes</u> (Factory tools cannot do this!)
Graphic TDI Timing Checker	<u>Yes</u> (Factory tools cannot do this!)
Control Module Finder	<u>Yes</u> (Factory tools cannot do this!)
(mis)Guided Fault Finding	<u>No</u>

* **KWP-1281:** The original VAG Diagnostic Protocol. Used on all diagnostic-capable systems from 1990 through model-year 2000.

** **KWP-2000:** The "new" VAG Diagnostic Protocol. Used on a few 2001+ ABS systems and many 2002+ Engines, Transmissions, and Airbags.

